

hizon
CERAMICA



Subtle Sophistication
FOR EVERY SPACE

600x1200MM

CLAY
COLLECTION





about US

Artistry of the nature

Welcome to Lizon Ceramica, your premier destination for top-quality ceramic tiles. Situated in the vibrant city of Morbi, Gujarat, we pride ourselves on our commitment to excellence in tile production.

At Lizon Ceramica, we specialize in crafting premium ceramic tiles that embody both style and durability. With state-of-the-art manufacturing facilities and a dedicated team of professionals, we ensure that each tile that bears our name meets the highest standards of quality and craftsmanship. Our extensive range of ceramic tiles caters to a diverse array of design preferences and architectural styles. From sleek and modern designs to timeless classics, we offer a comprehensive selection that empowers our customers to bring their creative visions to life.

We understand the importance of sustainability in today's world, which is why we prioritize eco-friendly manufacturing practices throughout our production process. By incorporating cutting-edge technologies and sustainable materials, we strive to minimize our environmental footprint while delivering exceptional products to our customers.

WHERE INNOVATION MEETS TECHNOLOGY

Ceramic industry is one of the most prosperous sector in our country. While technology is rolling over every other field and improving the standard of production, our company also hoes hand in hand by digitizing itself to provide the promised service and value of their money to our clients and customers.

KEDA

HOPETECH

MODENA

HLT



CLAY
COLLECTION

600x1200MM

Matte Metamorphosis:
Transforming Ordinary to Extraordinary.



UNMATCHED ELEGANCE AND STRENGTH

In this time and age, hygiene, cleanliness and comfort is a priority and everyone requires a place where they feel completely at home. The multifaceted surfaces of this collection make everyday life easier while achieving distinction in the decor segment for every home and public area. These surfaces with their convenient features offer an ideal tiling solution for a modern lifestyle.



HIGH
STRENGTH



EASY
MAINTENANCE



SOUND
REDUCTION



DIMENSIONAL
STABILITY



HYGIENIC
SURFACE



WATER
RESISTANT



FIRE
RESISTANT



CHEMICAL
RESISTANT



IMPACT
RESISTANCE



THERMAL
RESISTANCE

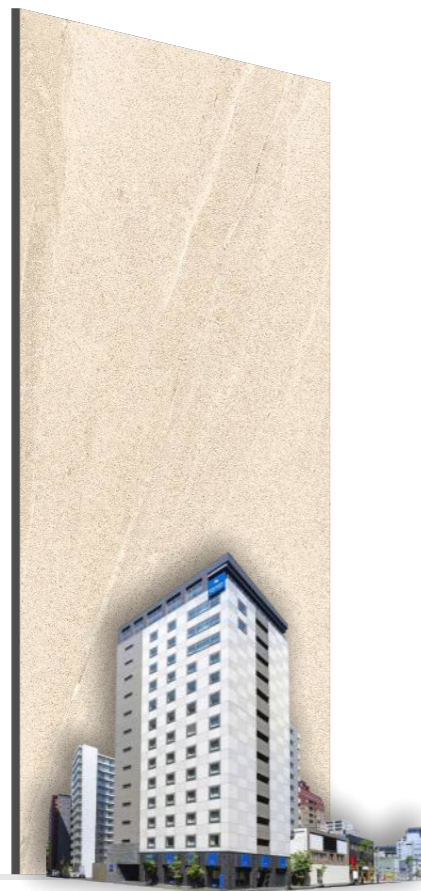


APPLICATION AREA

Design any surface or volume from the Synergy between wit, evolution, and material, to develop all types of continuous surfaces worktops, counters and furniture among Other applications.



LIVING
AREA



CORPORATE
OFFICES



MALLS &
RESTAURANT



INTERIORS &
COUNTERTOPS



HOSPITALS
AREA



GYM &
URBAN CENTERS

BRING THE NATURAL
BEAUTY OF EARTHY SHADES
THAT ADD A MAJESTIC TOUCH...





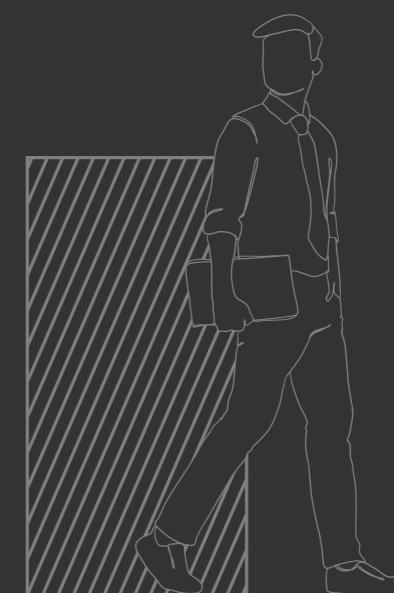
lizon
CERAMICA

ALEXA BIANCO

Finish :
MATT SURFACE

Thickness :
8.5MM

Size :
600X1200MM
60X120CM
2'X4'



9
RANDOMS



FashionPoint

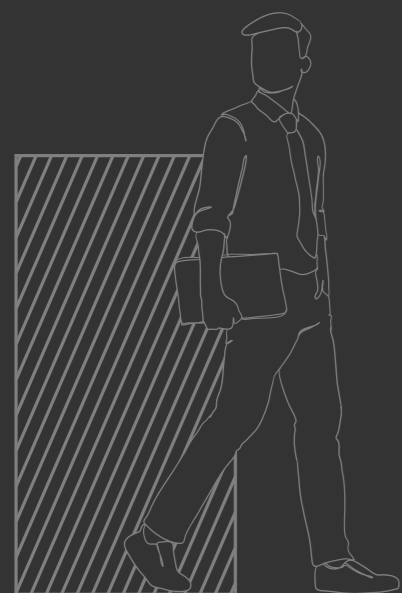


ALEXA GREY

Finish :
MATT SURFACE

Thickness :
8.5MM

Size :
600X1200MM
60X120CM
2'X4'



9
RANDOMS





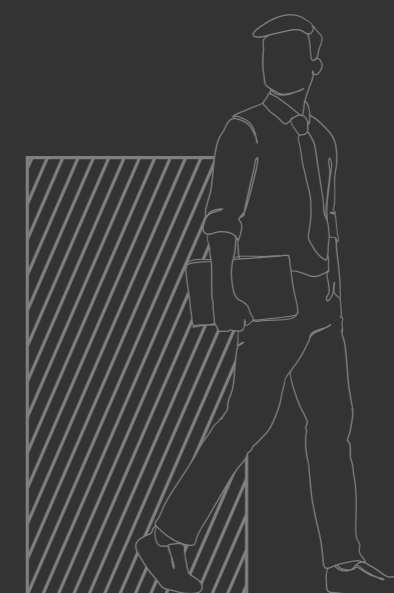
lizon
CERAMICA

GRAINY BEIGE

Finish :
MATT SURFACE

Thickness :
8.5MM

Size :
600X1200MM
60X120CM
2'X4'



11
RANDOMS



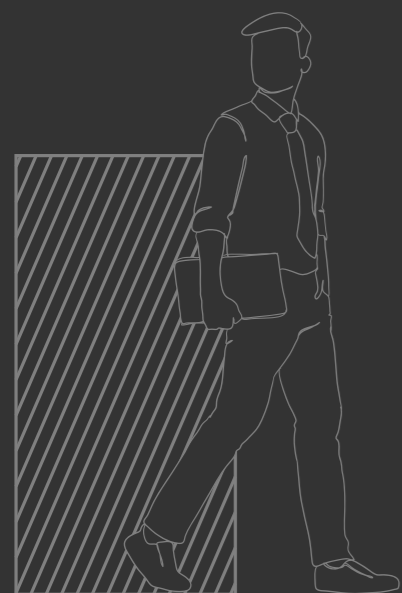


GRAINY BLACK

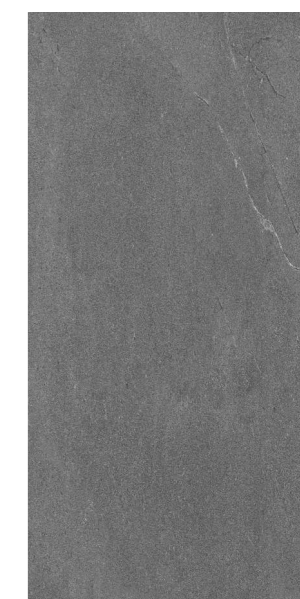
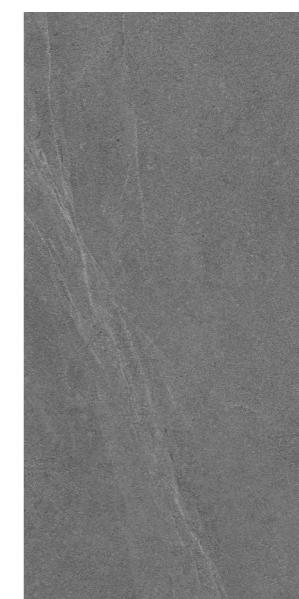
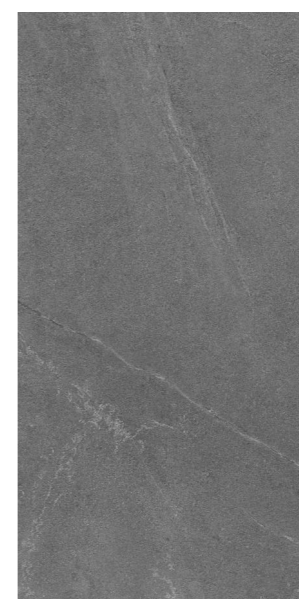
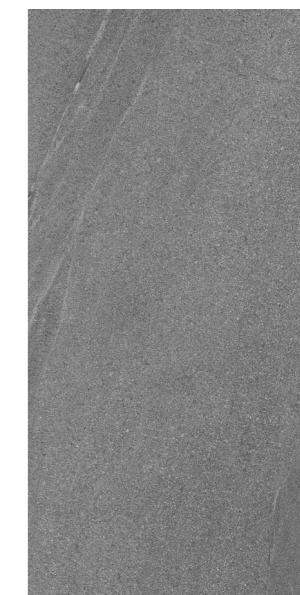
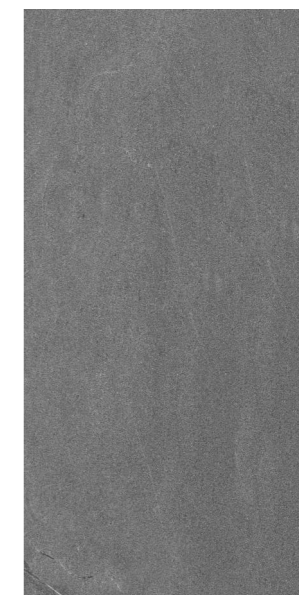
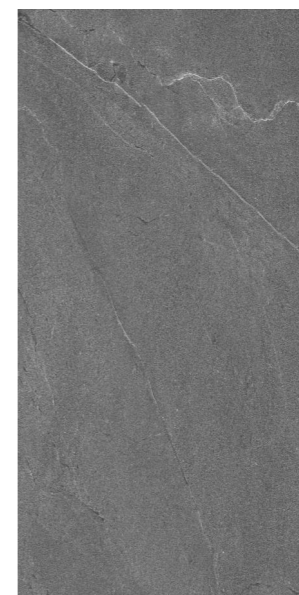
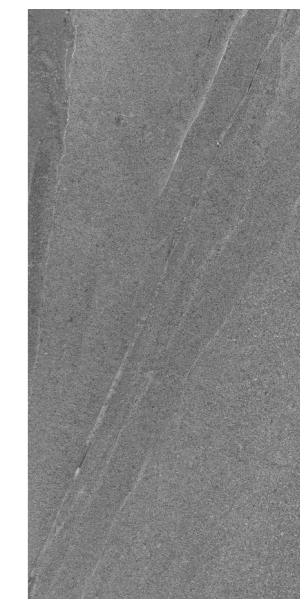
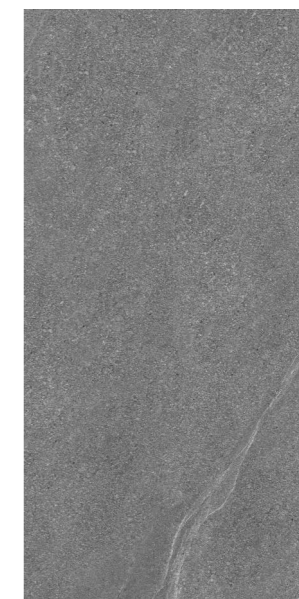
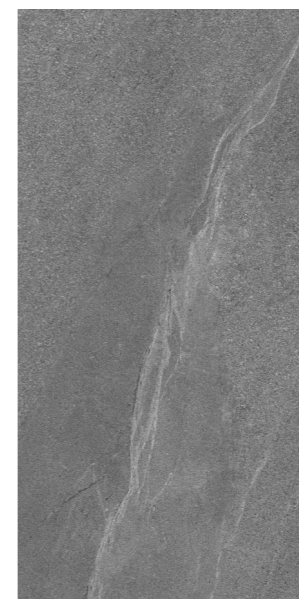
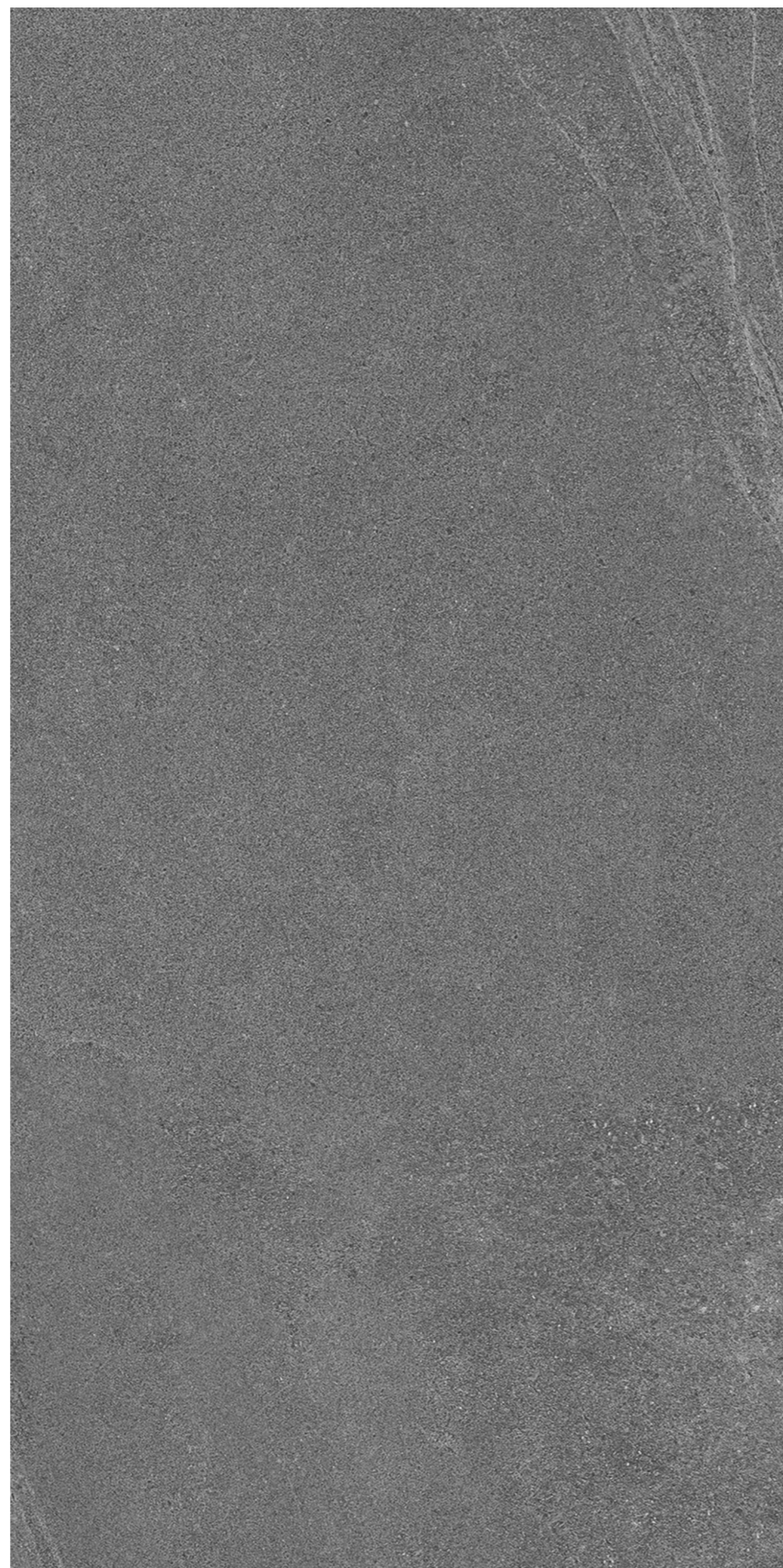
Finish :
MATT SURFACE

Thickness :
8.5MM

Size :
600X1200MM
60X120CM
2'X4'



11
RANDOMS





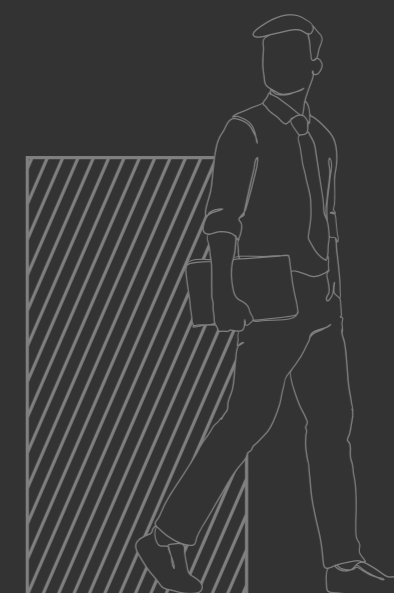
lizon
CERAMICA

GRAINY BIANCO

Finish :
MATT SURFACE

Thickness :
8.5MM

Size :
600X1200MM
60X120CM
2'X4'



11
RANDOMS

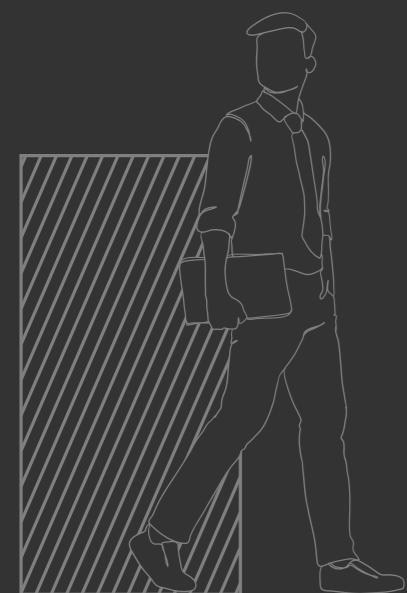


GRAINY BROWN

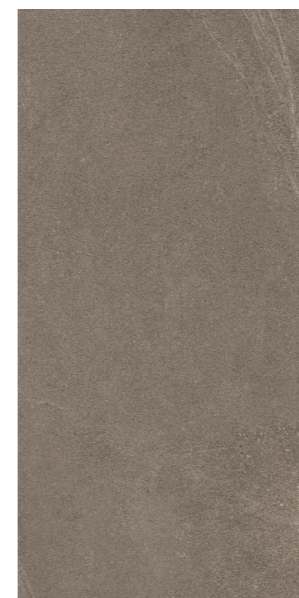
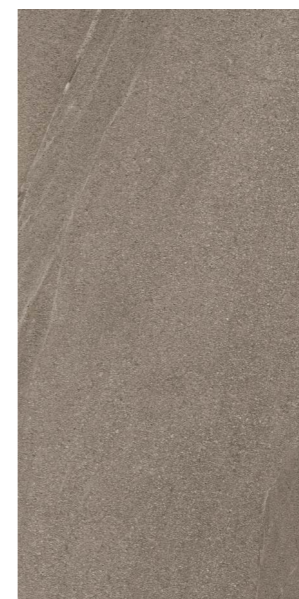
Finish :
MATT SURFACE

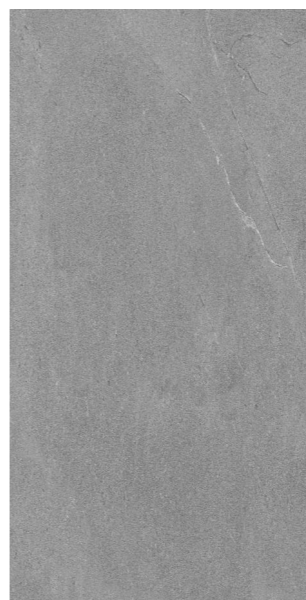
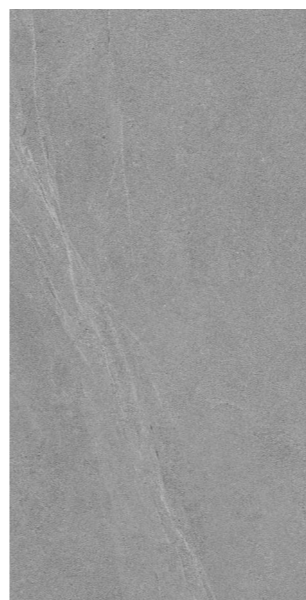
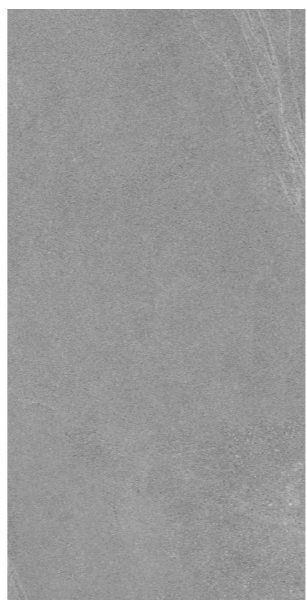
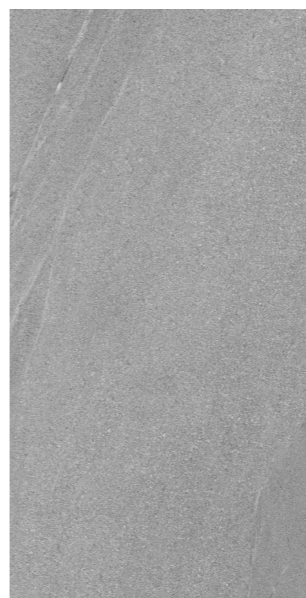
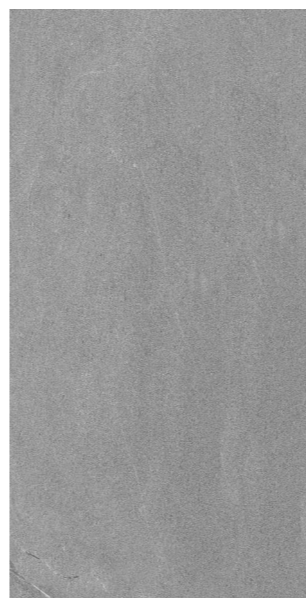
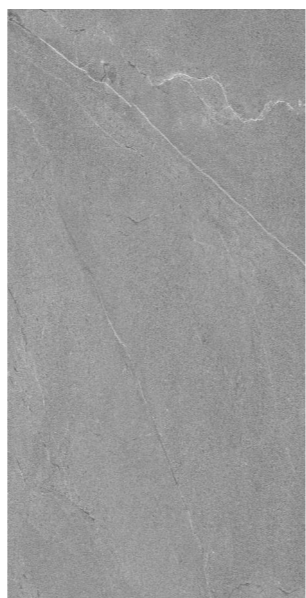
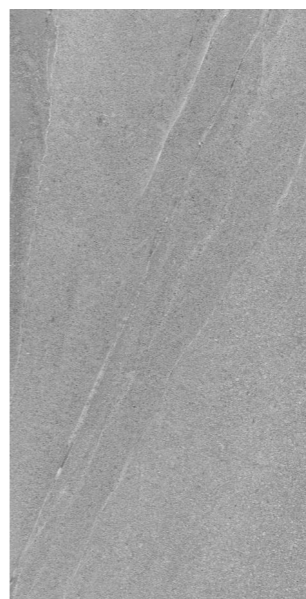
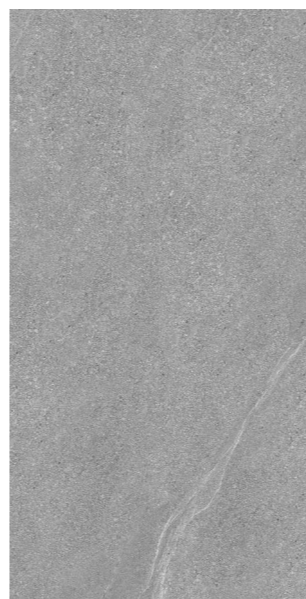
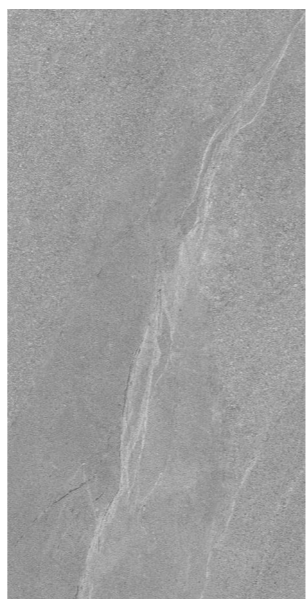
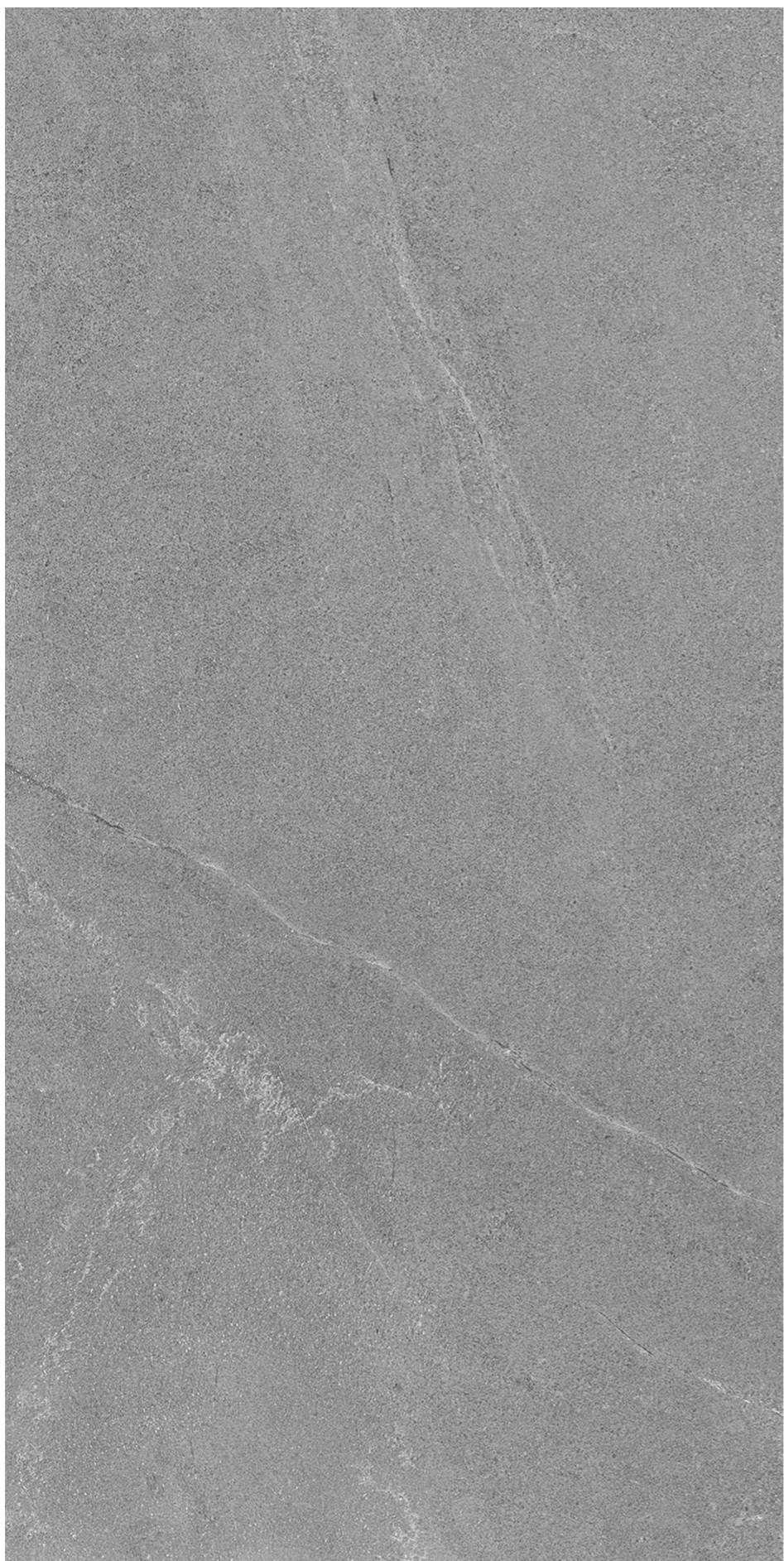
Thickness :
8.5MM

Size :
600X1200MM
60X120CM
2'X4'



11
RANDOMS





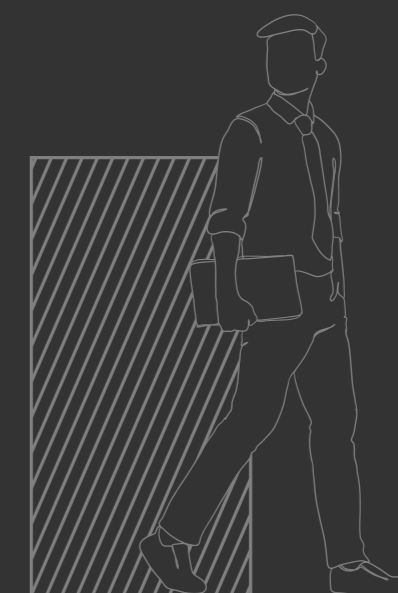
lizon
CERAMICA

GRAINY GREY

Finish :
MATT SURFACE

Thickness :
8.5MM

Size :
600X1200MM
60X120CM
2'X4'



11
RANDOMS



GRAINY GRIS

Finish :
MATT SURFACE

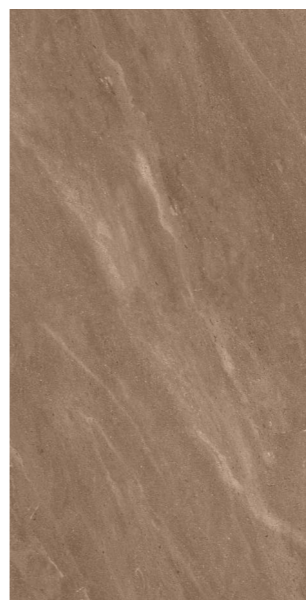
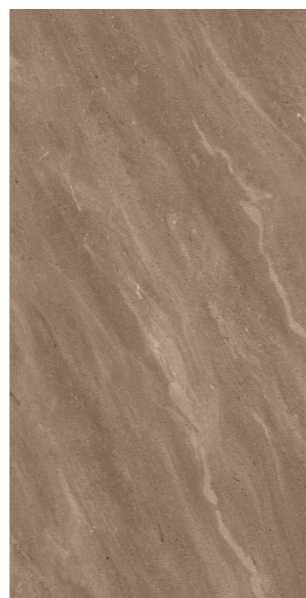
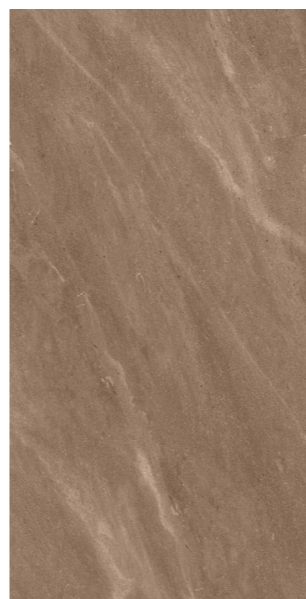
Thickness :
8.5MM

Size :
600X1200MM
60X120CM
2'X4'



11
RANDOMS





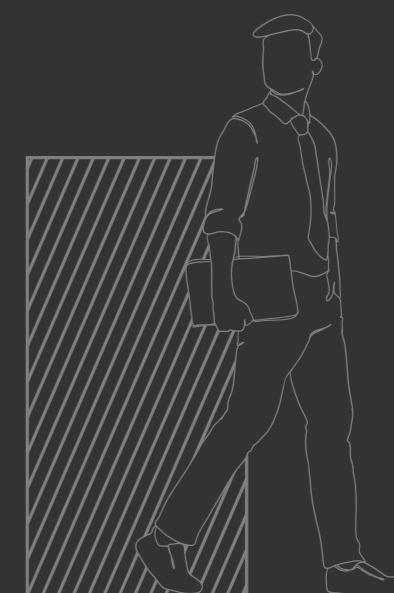
lizon
CERAMICA

HAZEL BROWN

Finish :
MATT SURFACE

Thickness :
8.5MM

Size :
600X1200MM
60X120CM
2'X4'



9
RANDOMS



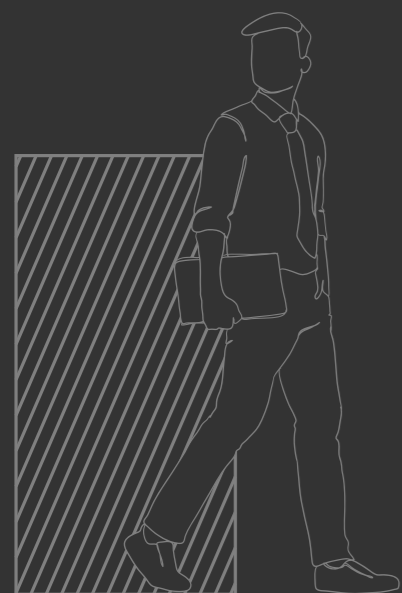


HAZEL BEIGE

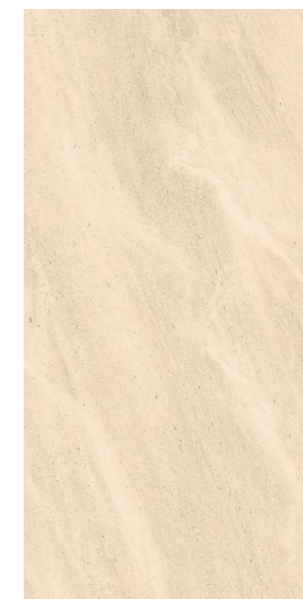
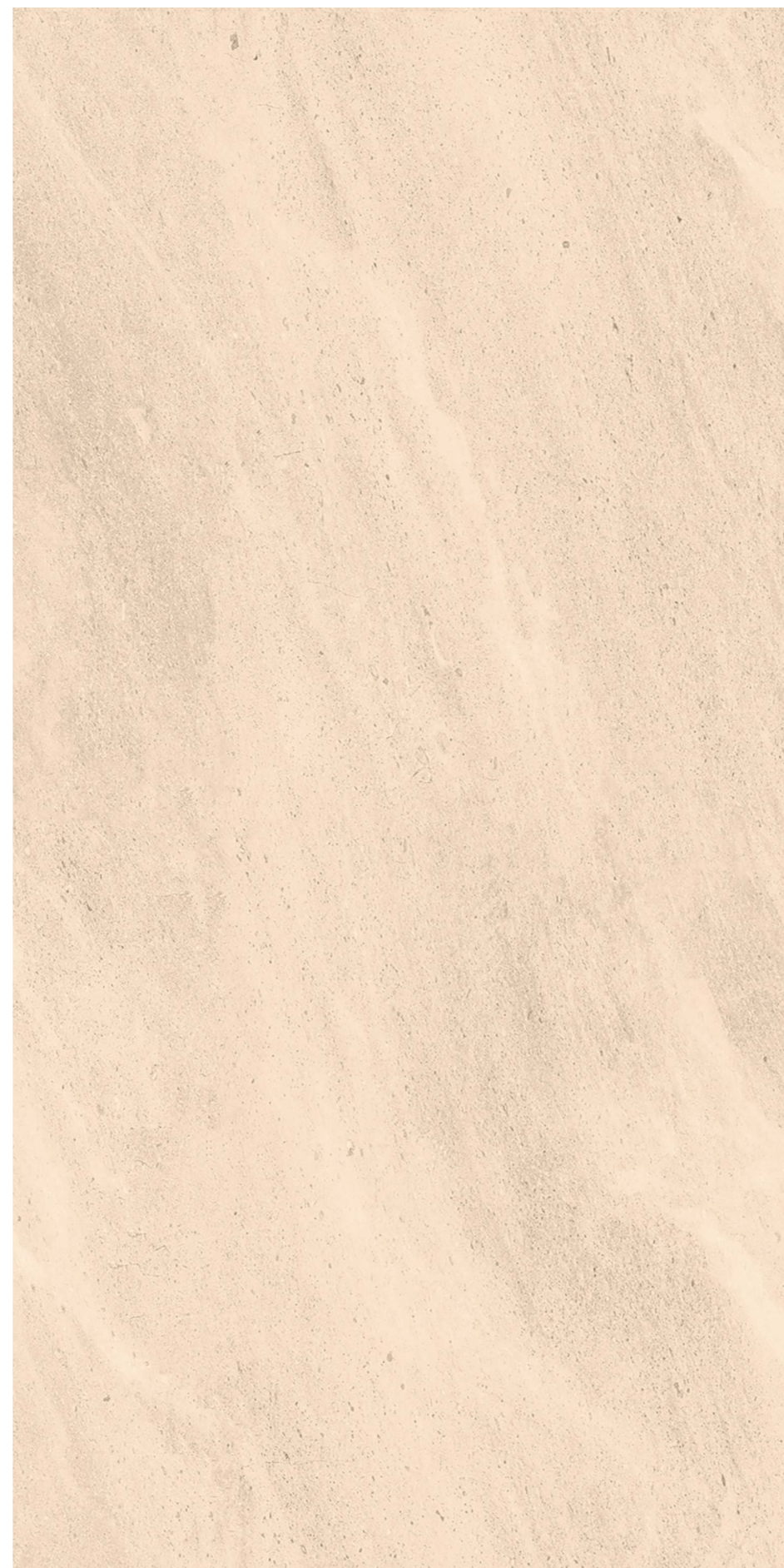
Finish :
MATT SURFACE

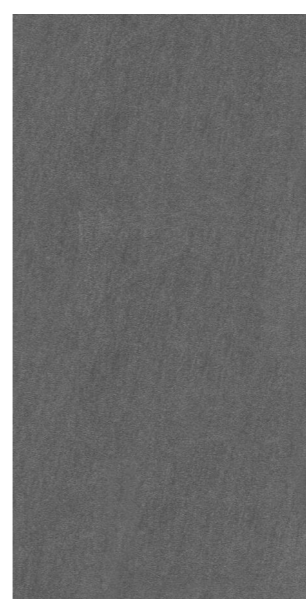
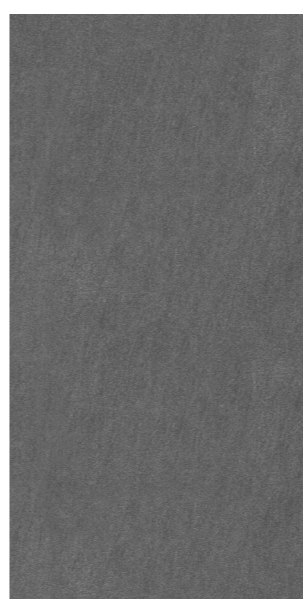
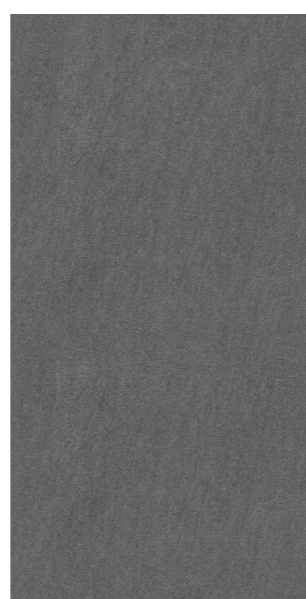
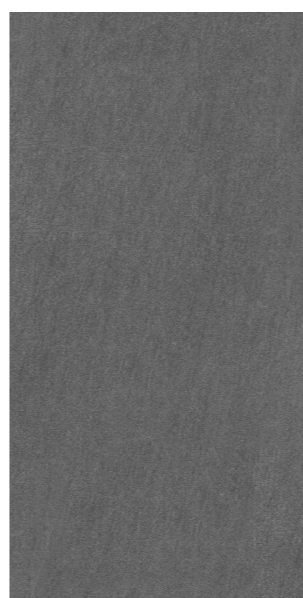
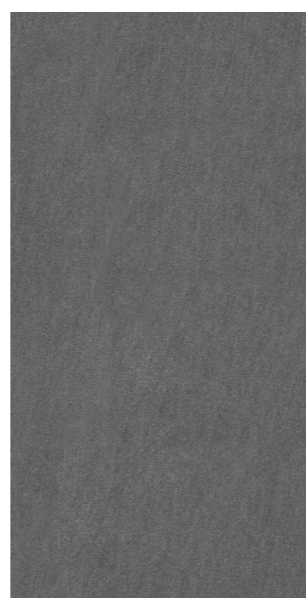
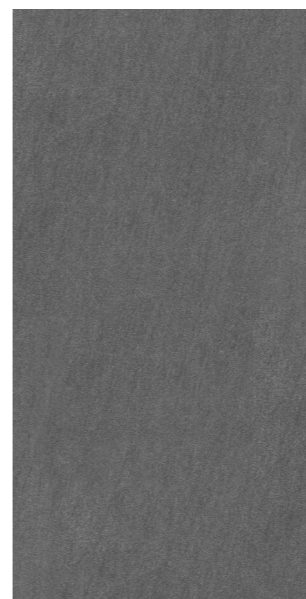
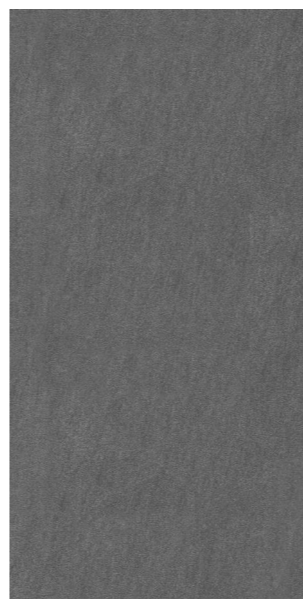
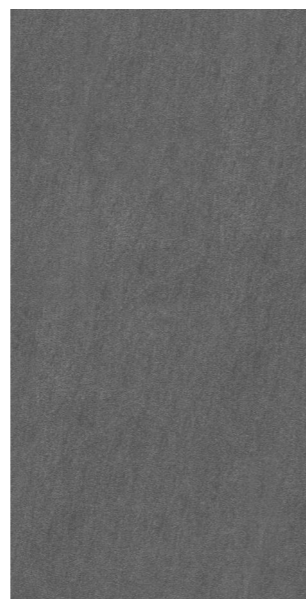
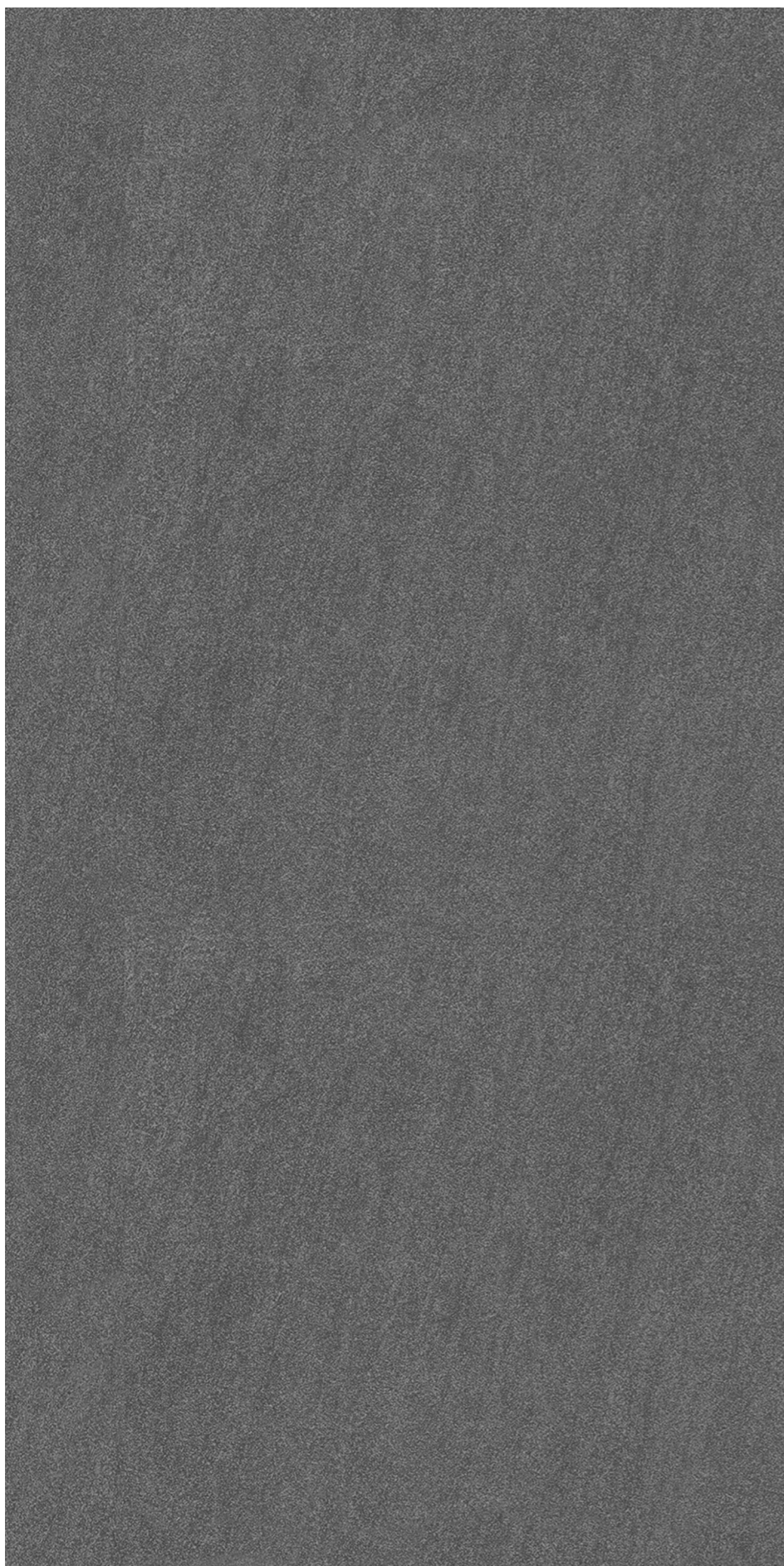
Thickness :
8.5MM

Size :
600X1200MM
60X120CM
2'X4'



9
RANDOMS





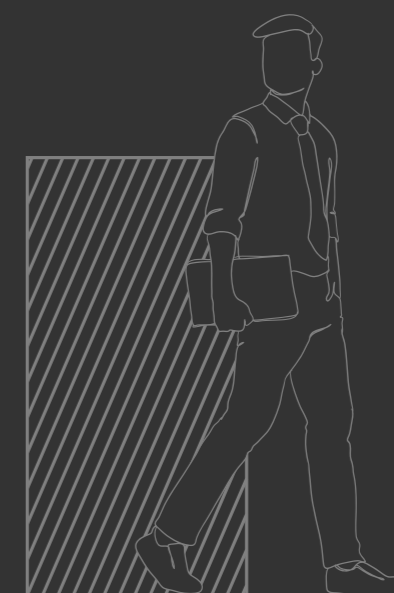
lizon
CERAMICA

MARCO NERO

Finish :
MATT SURFACE

Thickness :
8.5MM

Size :
600X1200MM
60X120CM
2'X4'



9
RANDOMS



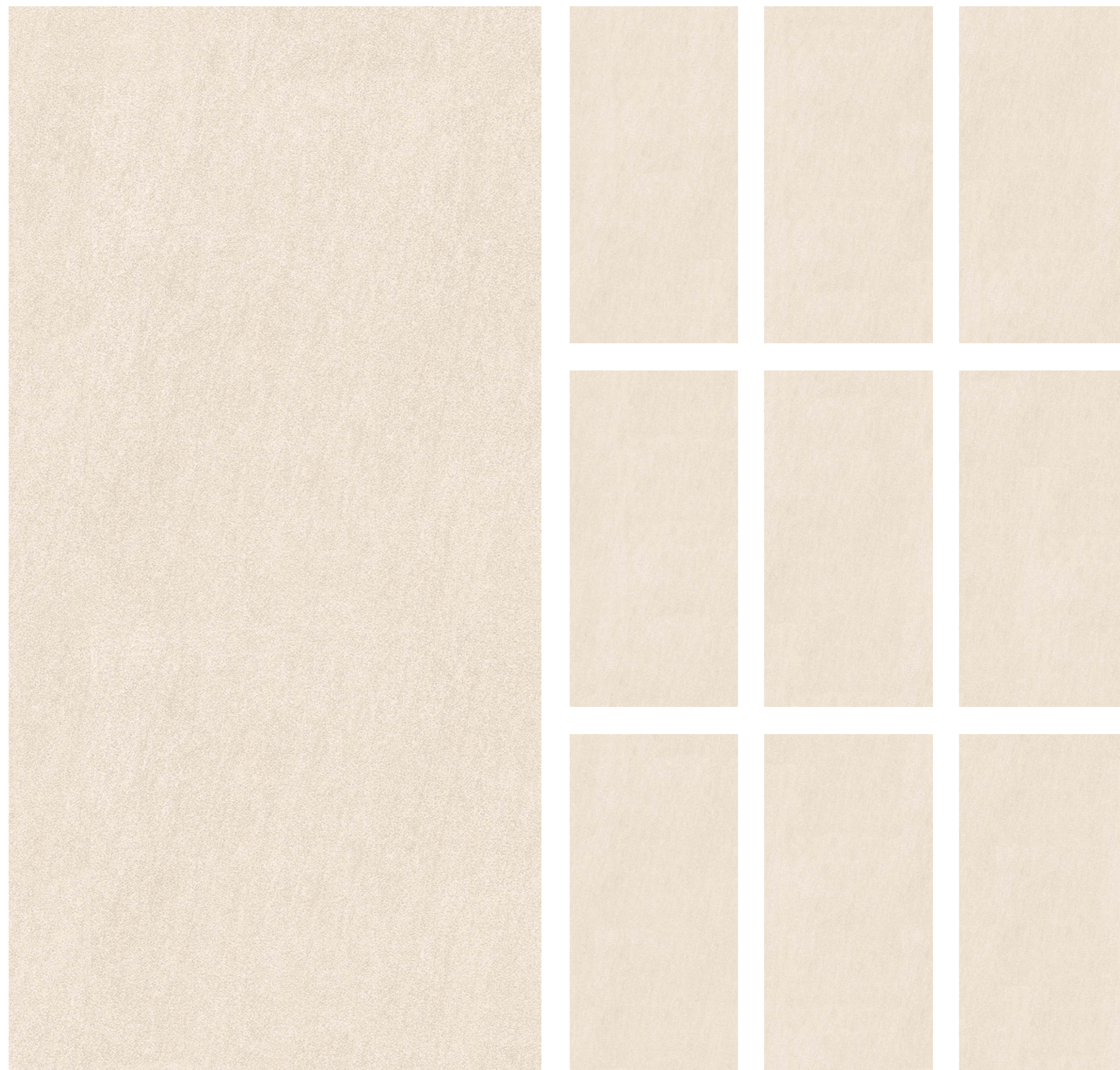
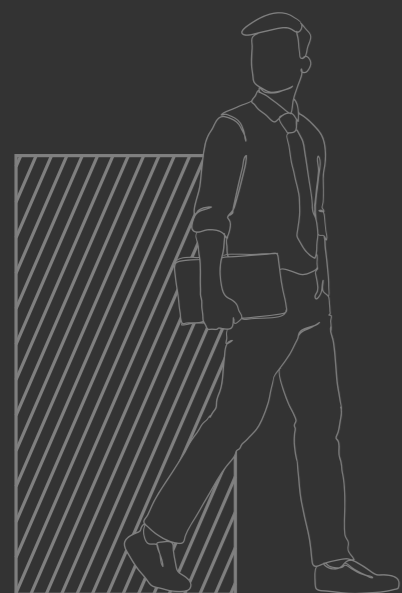


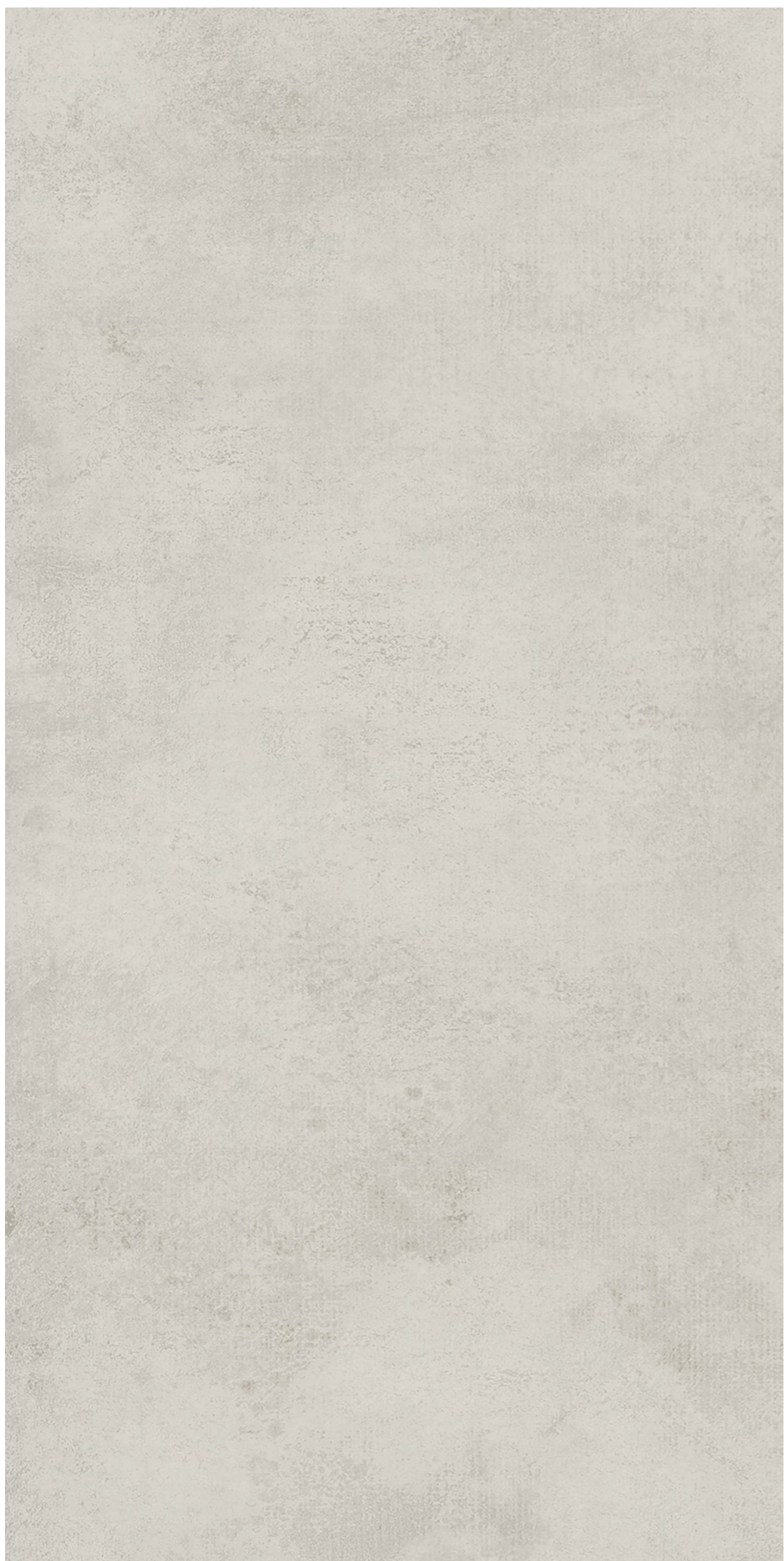
MARCO BEIGE

Finish :
MATT SURFACE

Thickness :
8.5MM

Size :
600X1200MM
60X120CM
2'X4'





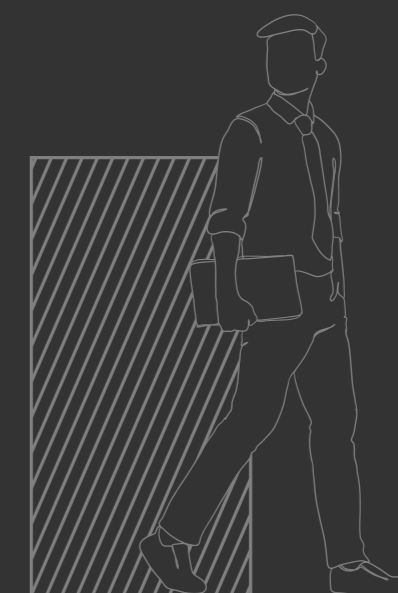
lizon
CERAMICA

MELTON BEIGE

Finish :
MATT SURFACE

Thickness :
8.5MM

Size :
600X1200MM
60X120CM
2'X4'



9
RANDOMS



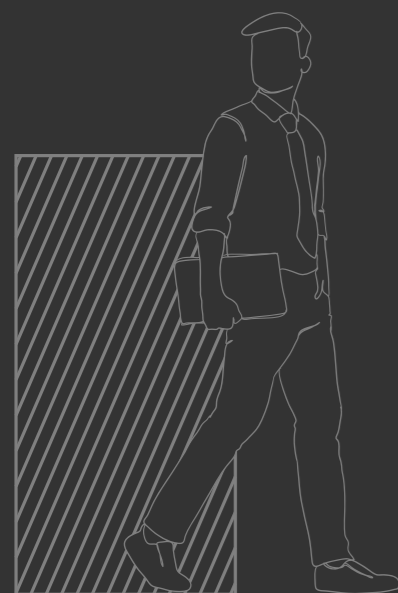


MELTON GREY

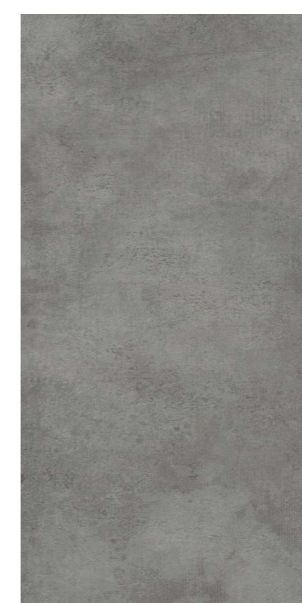
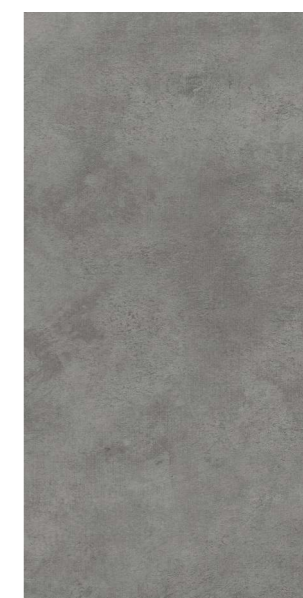
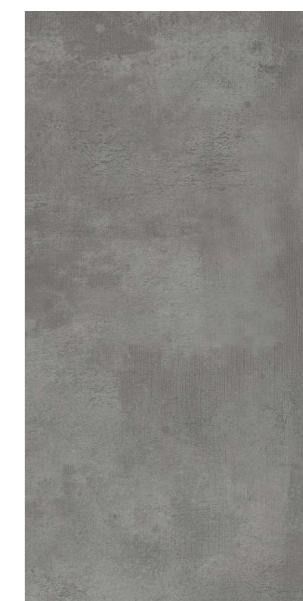
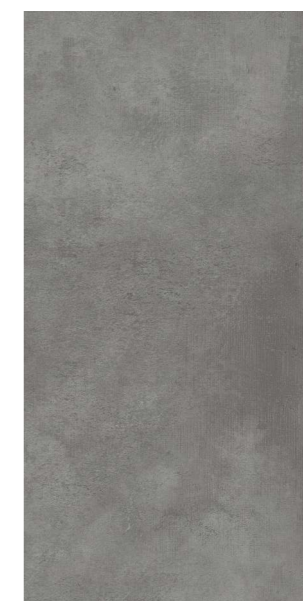
Finish :
MATT SURFACE

Thickness :
8.5MM

Size :
600X1200MM
60X120CM
2'X4'



9
RANDOMS





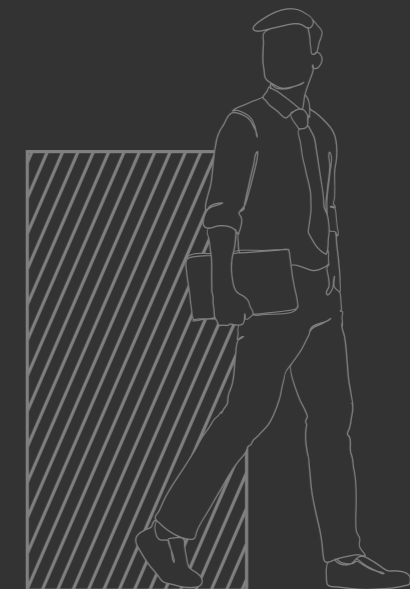
lizon
CERAMICA

MIST BEIGE

Finish :
MATT SURFACE

Thickness :
8.5MM

Size :
600X1200MM
60X120CM
2'X4'



9
RANDOMS



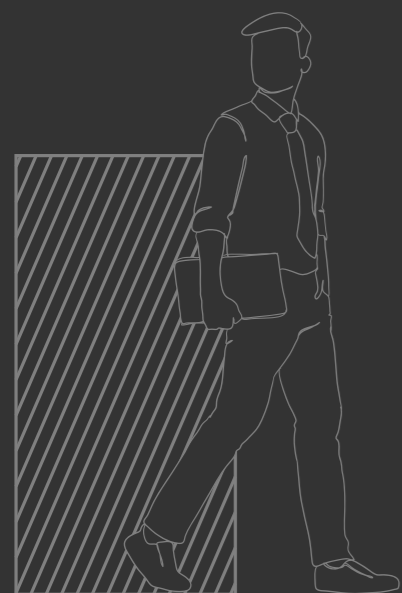


MIST CREMA

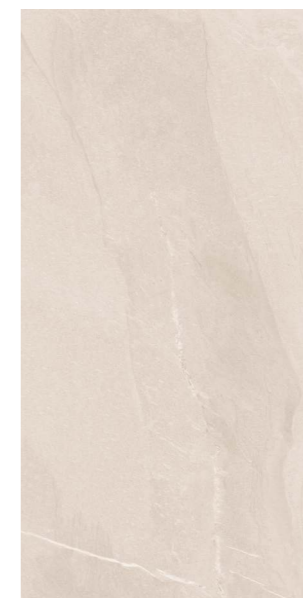
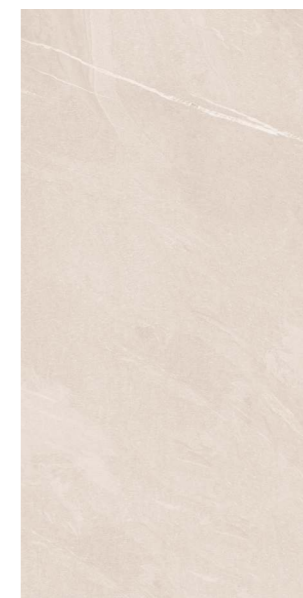
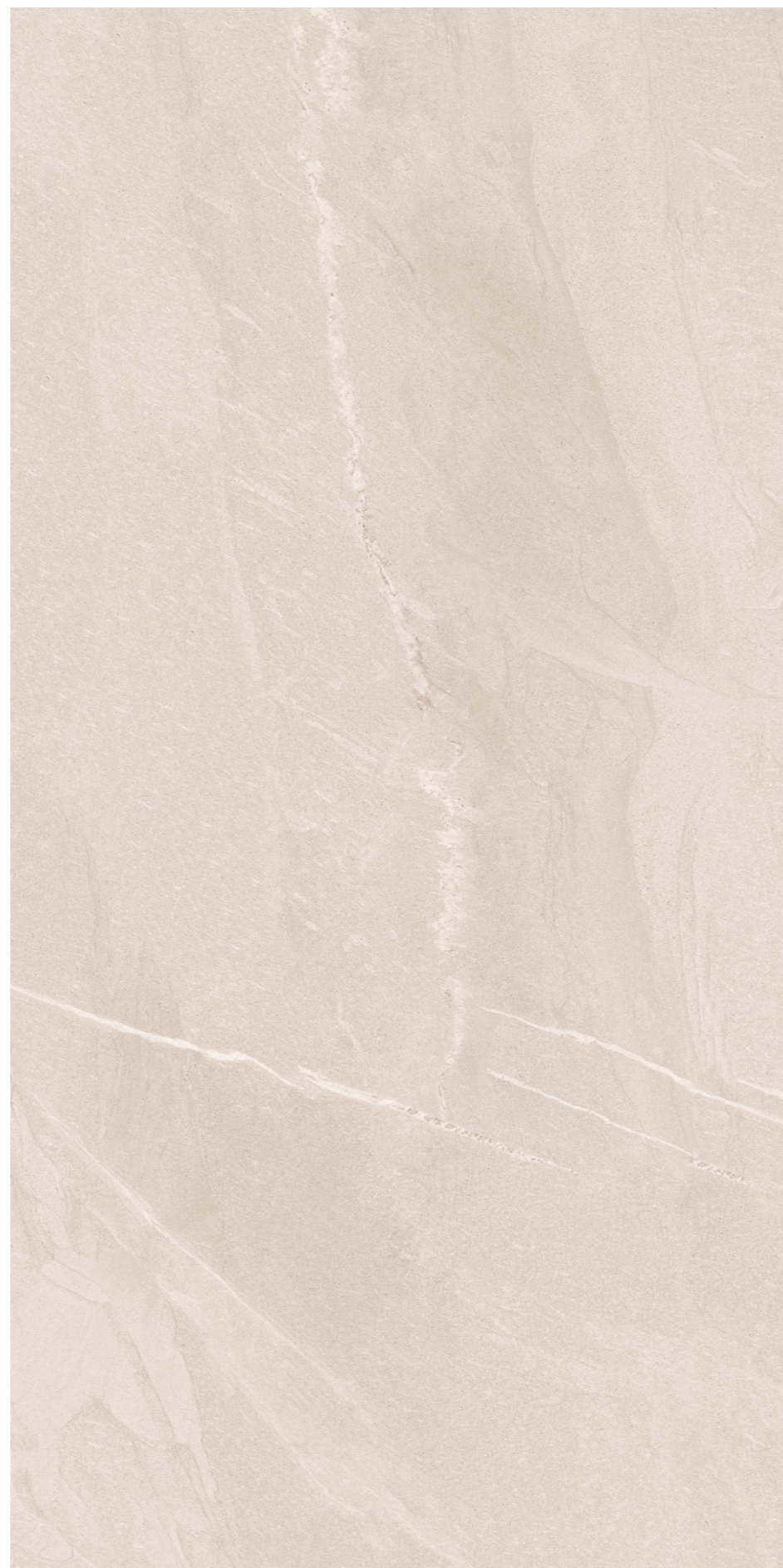
Finish :
MATT SURFACE

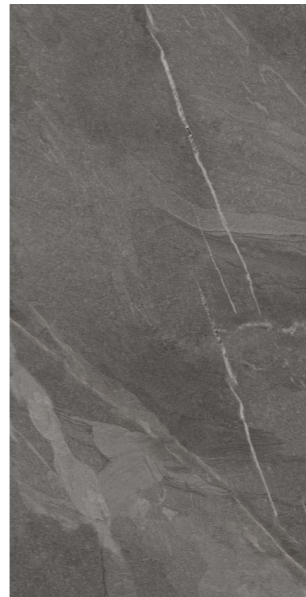
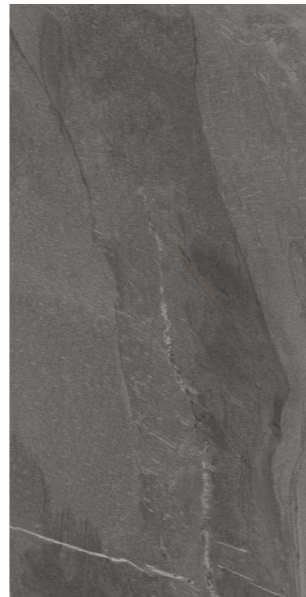
Thickness :
8.5MM

Size :
600X1200MM
60X120CM
2'X4'



9
RANDOMS





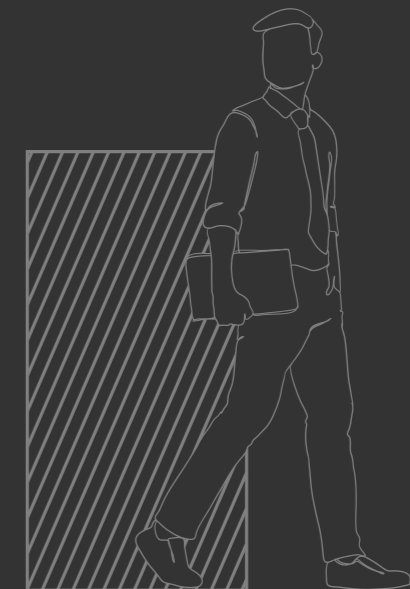
lizon
CERAMICA

MIST MOKA

Finish :
MATT SURFACE

Thickness :
8.5MM

Size :
600X1200MM
60X120CM
2'X4'



9
RANDOMS

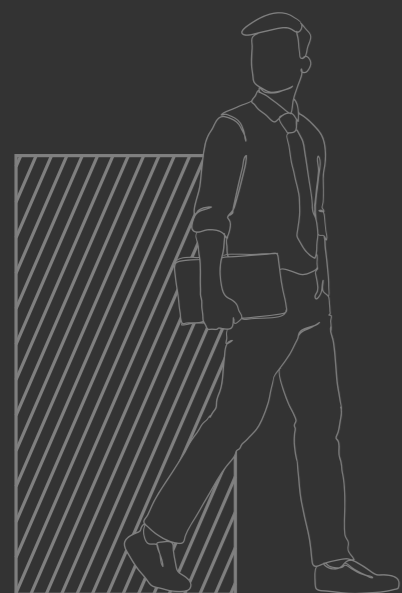


MIST NERO

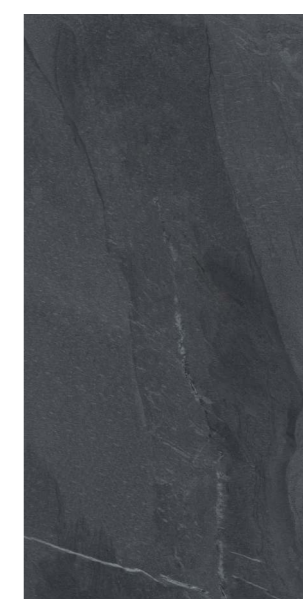
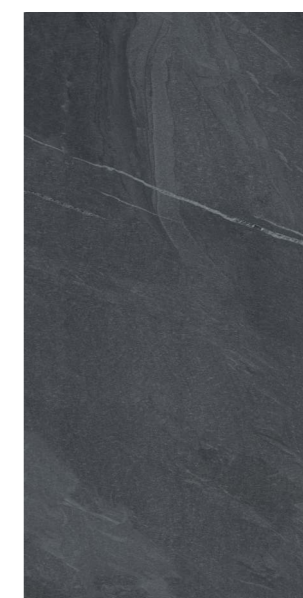
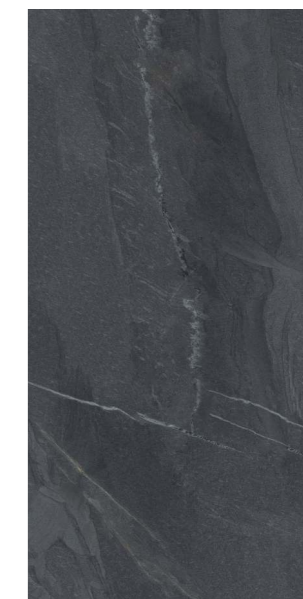
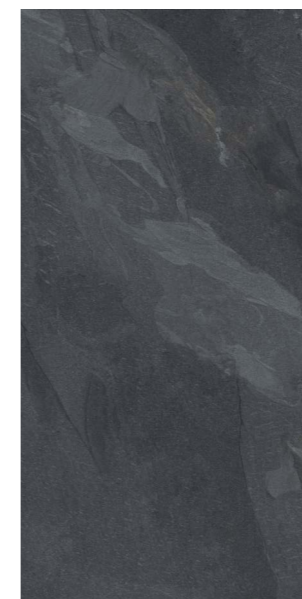
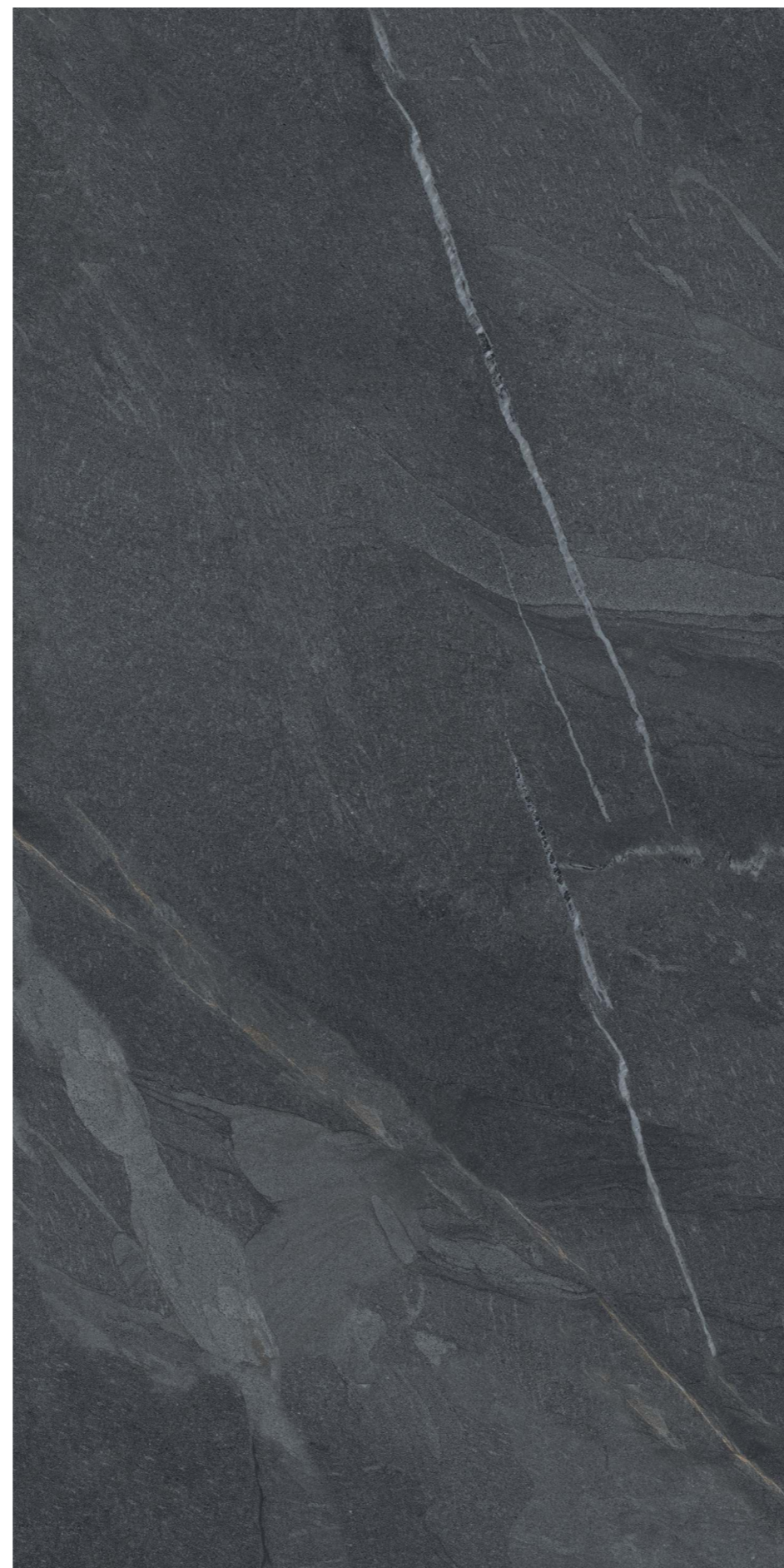
Finish :
MATT SURFACE

Thickness :
8.5MM

Size :
600X1200MM
60X120CM
2'X4'



9
RANDOMS





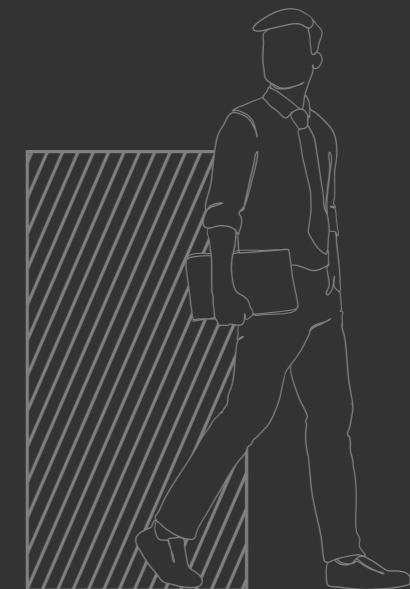
lizon
CERAMICA

ROCK BROWN

Finish :
MATT SURFACE

Thickness :
8.5MM

Size :
600X1200MM
60X120CM
2'X4'



9
RANDOMS



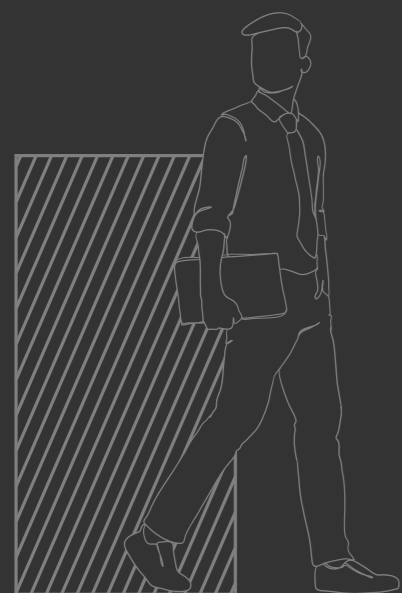


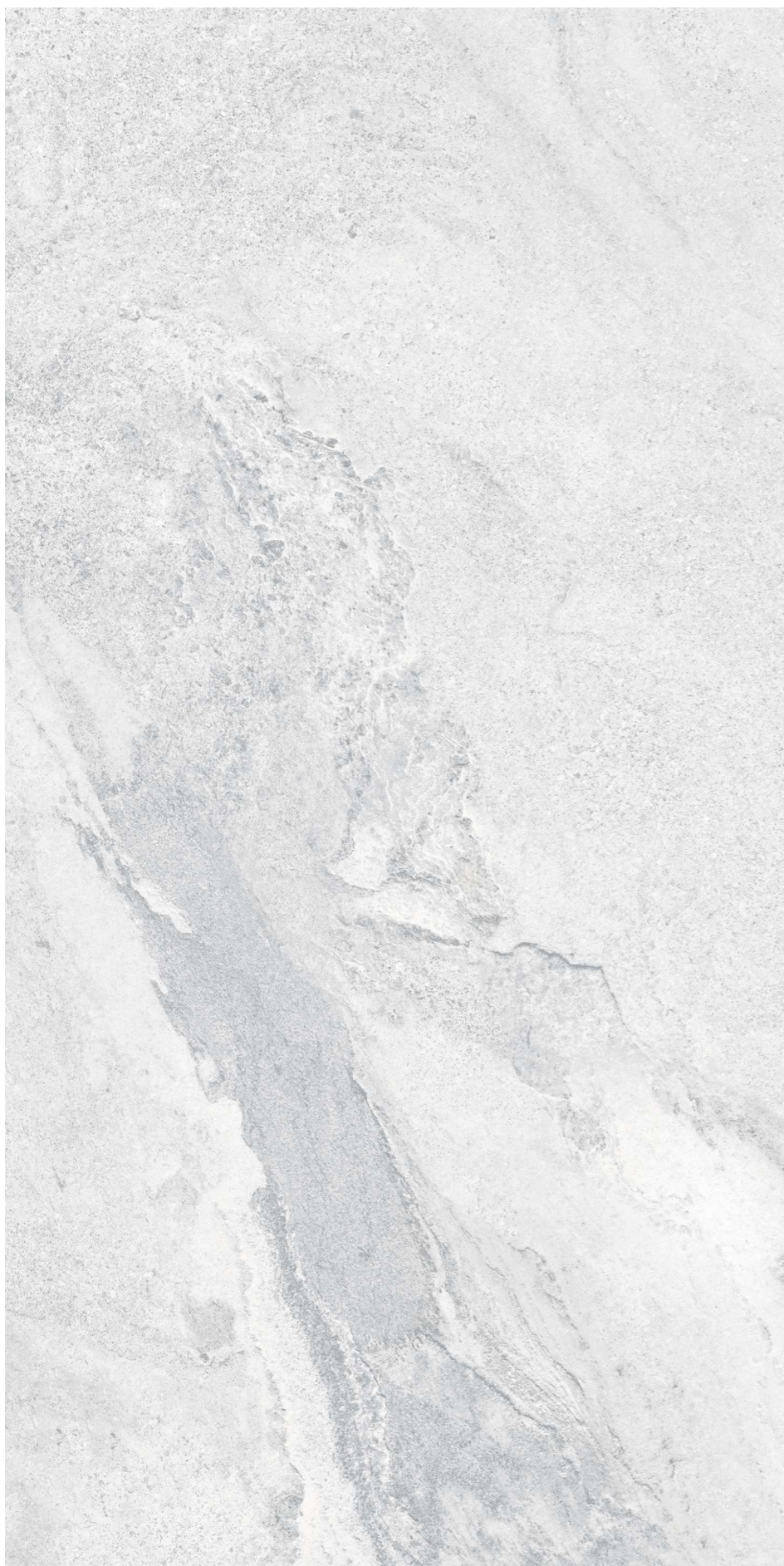
ROCK BEIGE

Finish :
MATT SURFACE

Thickness :
8.5MM

Size :
600X1200MM
60X120CM
2'X4'





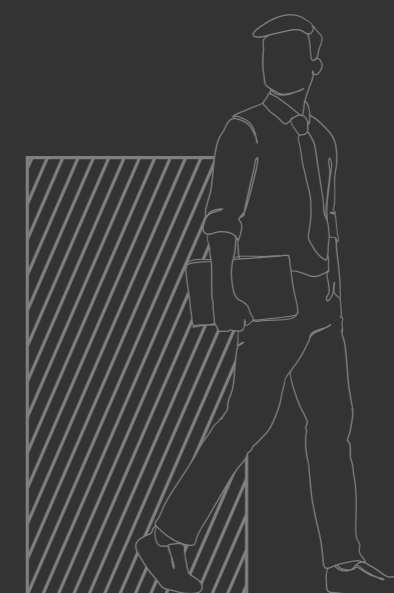
lizon
CERAMICA

ROCK BIANCO

Finish :
MATT SURFACE

Thickness :
8.5MM

Size :
600X1200MM
60X120CM
2'X4'



9
RANDOMS

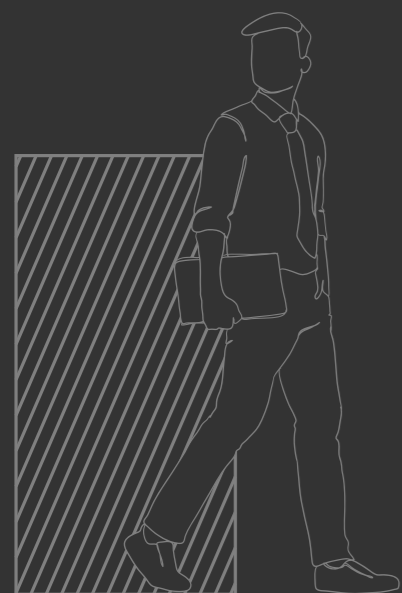


ROCK GREY

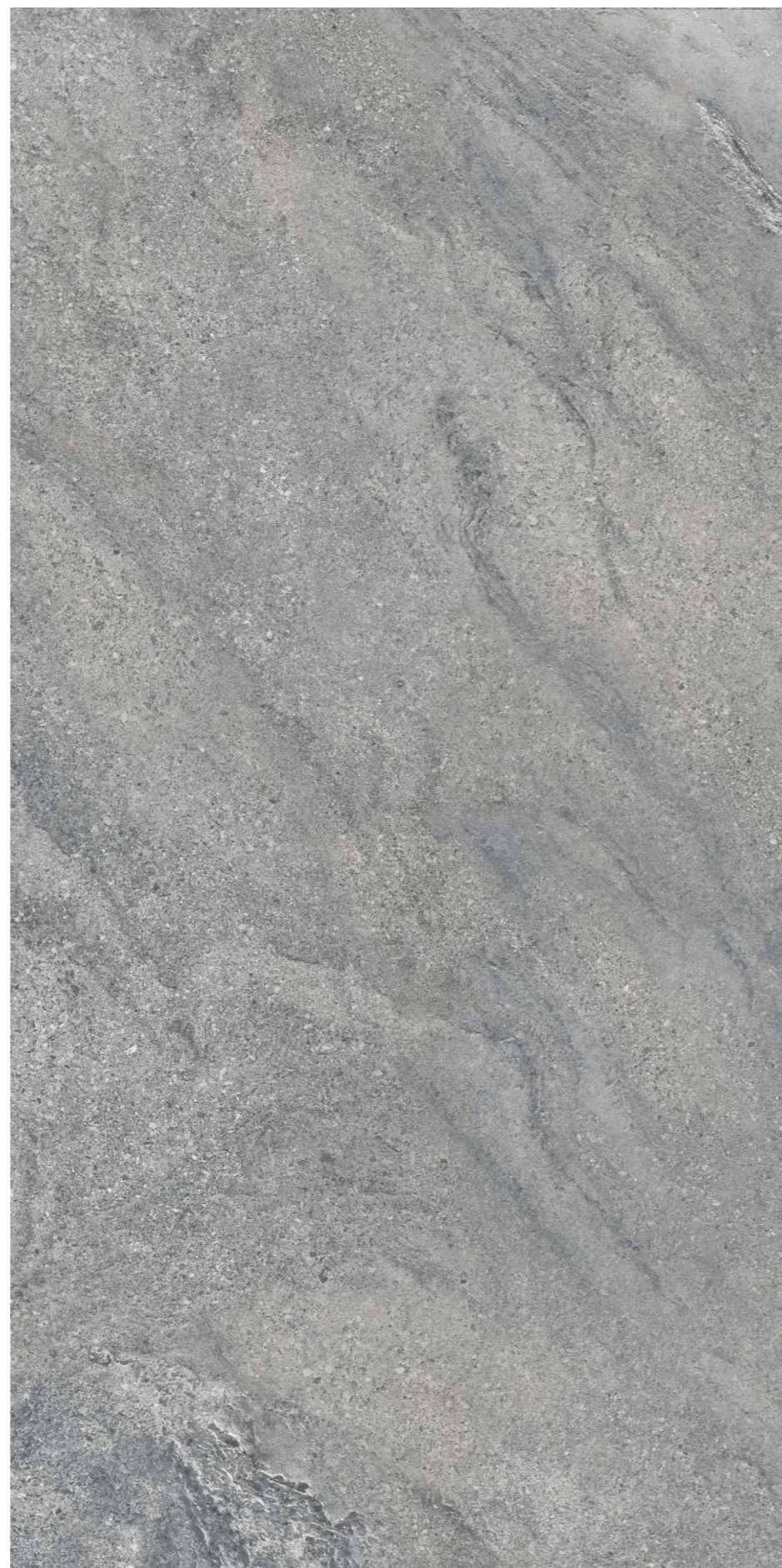
Finish :
MATT SURFACE

Thickness :
8.5MM

Size :
600X1200MM
60X120CM
2'X4'



9
RANDOMS





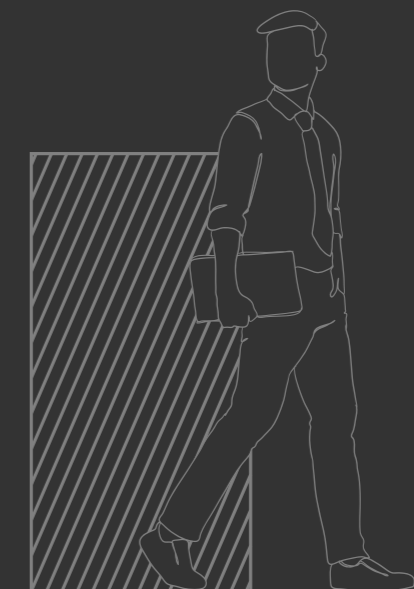
lizon
CERAMICA

THUNDER WHITE

Finish :
MATT SURFACE

Thickness :
8.5MM

Size :
600X1200MM
60X120CM
2'X4'



9
RANDOMS



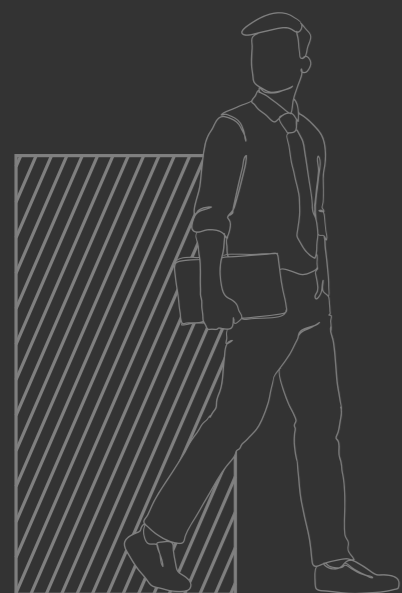


THUNDER BEIGE

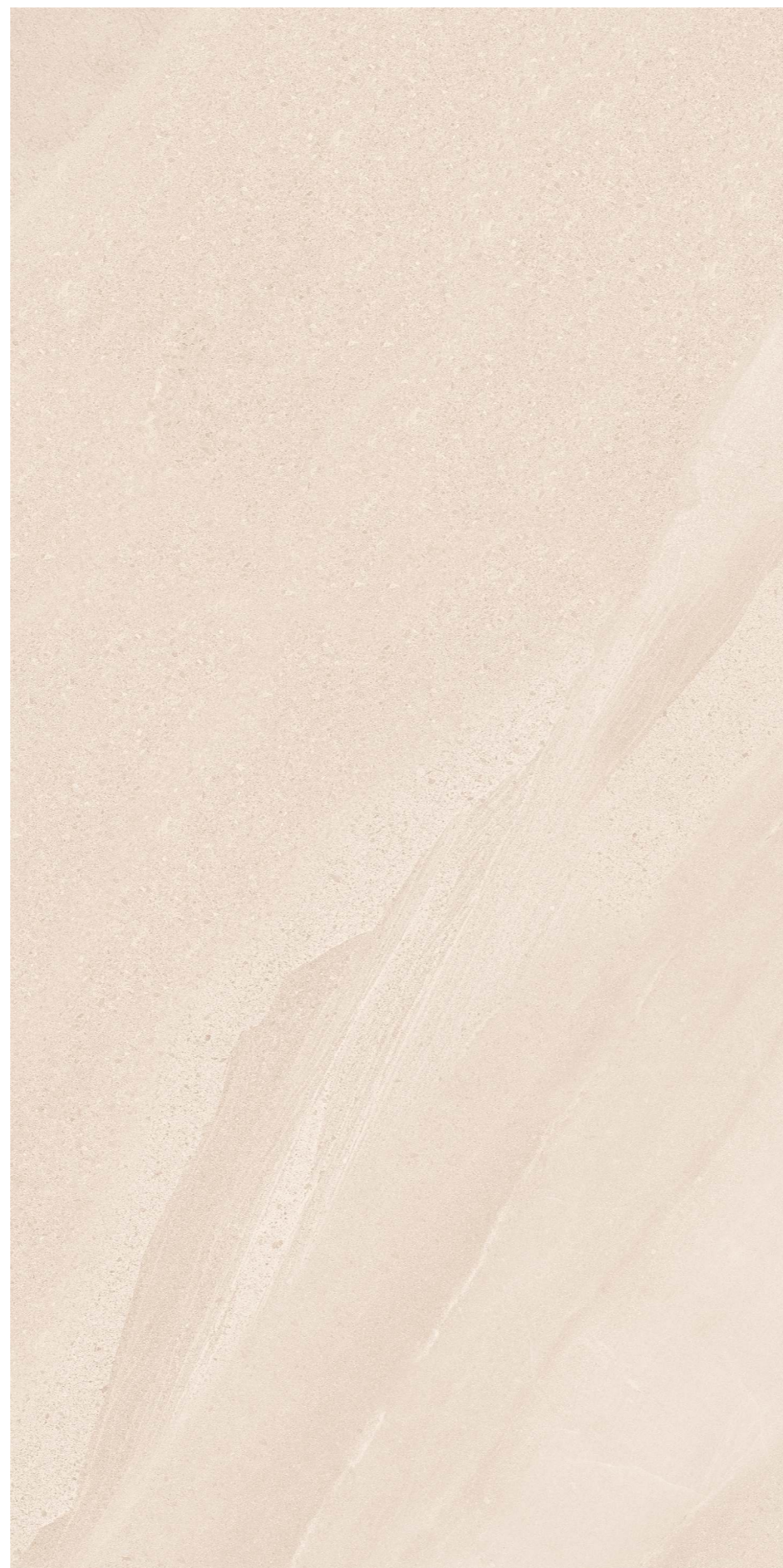
Finish :
MATT SURFACE

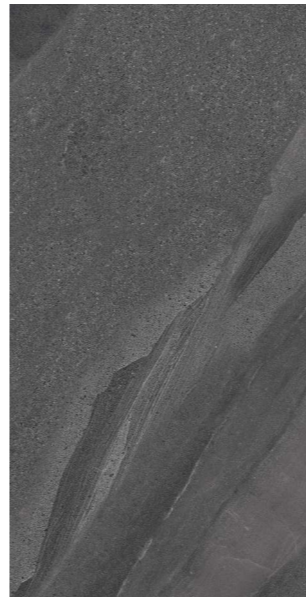
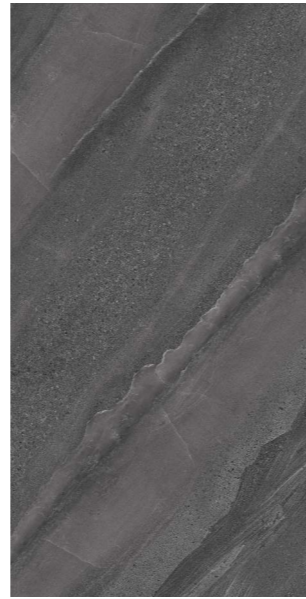
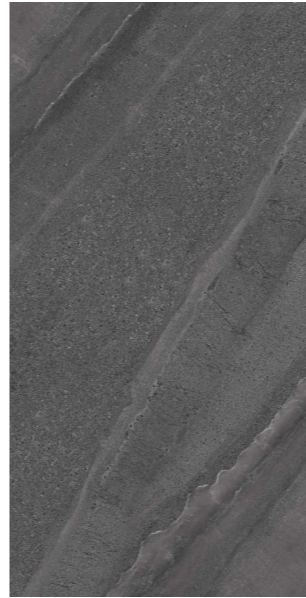
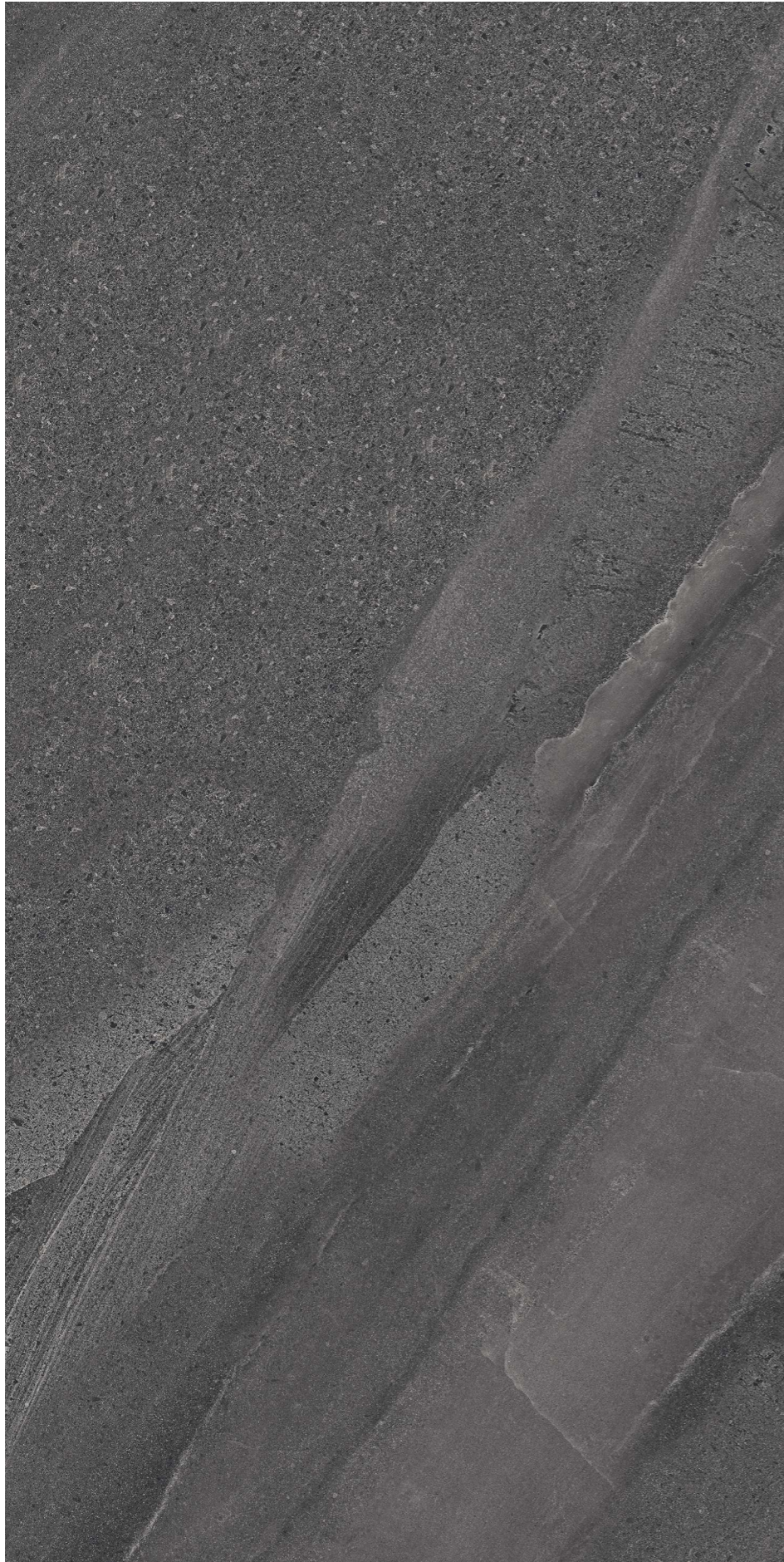
Thickness :
8.5MM

Size :
600X1200MM
60X120CM
2'X4'



9
RANDOMS





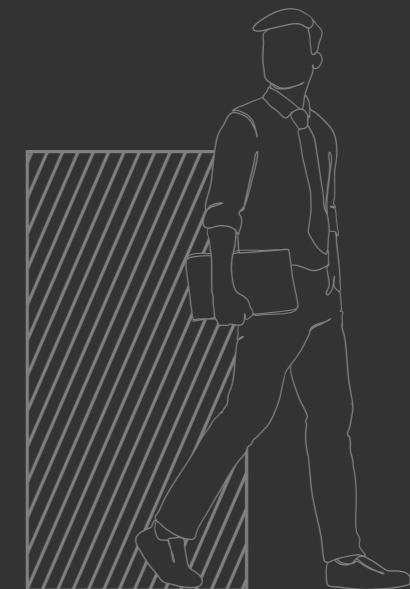
lizon
CERAMICA

THUNDER GREY

Finish :
MATT SURFACE

Thickness :
8.5MM

Size :
600X1200MM
60X120CM
2'X4'



9
RANDOMS

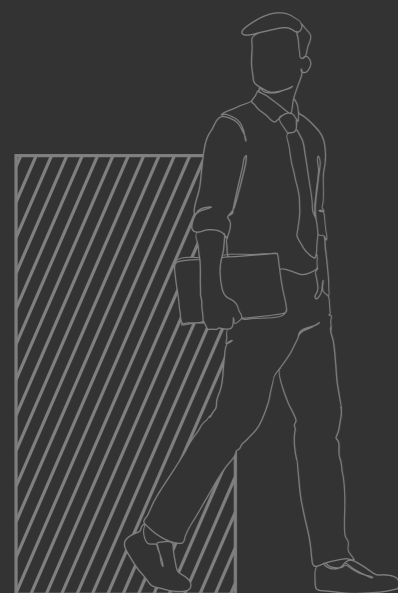


THUNDER GRIS

Finish :
MATT SURFACE

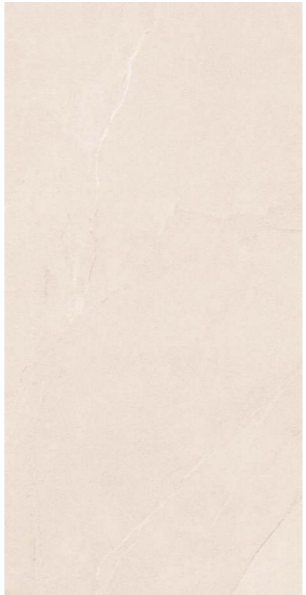
Thickness :
8.5MM

Size :
600X1200MM
60X120CM
2'X4'



9
RANDOMS





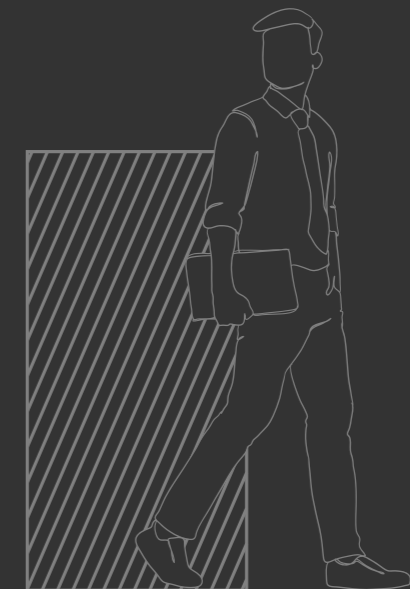
lizon
CERAMICA

VICTORIA BEIGE

Finish :
MATT SURFACE

Thickness :
8.5MM

Size :
600X1200MM
60X120CM
2'X4'



9
RANDOMS



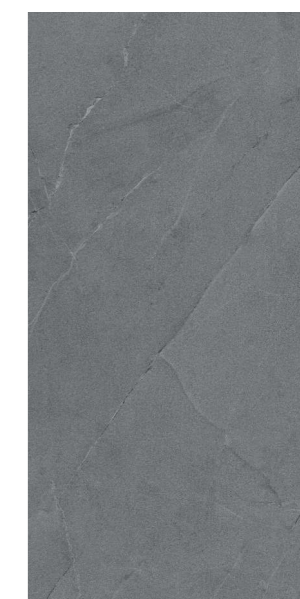
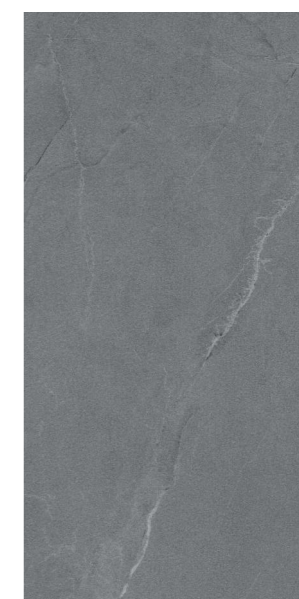
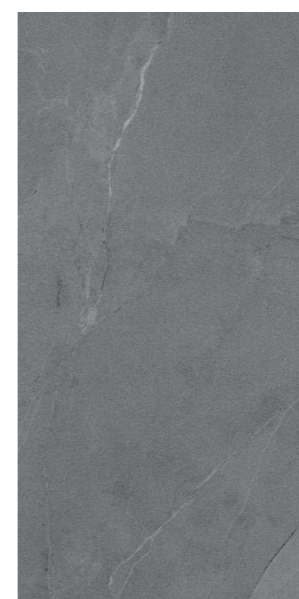
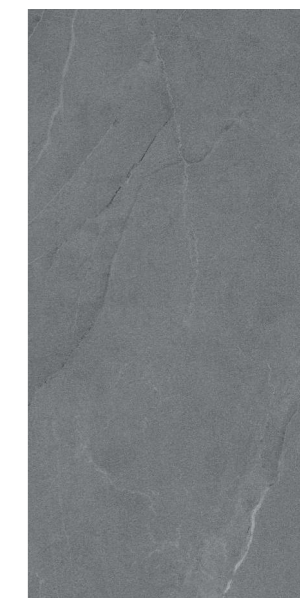
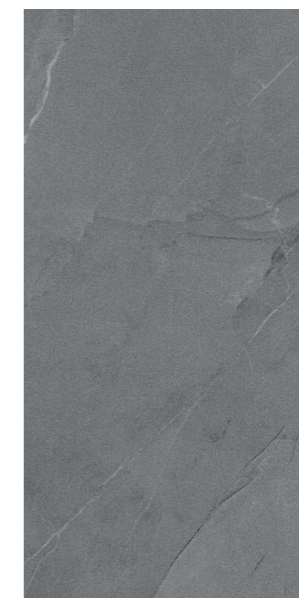
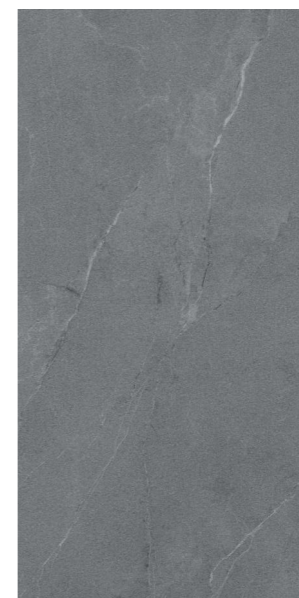
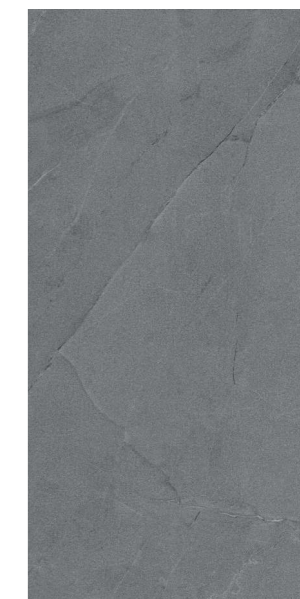
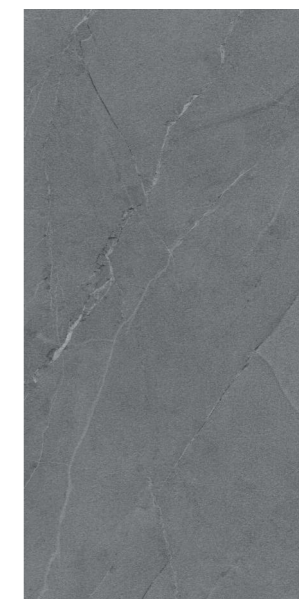
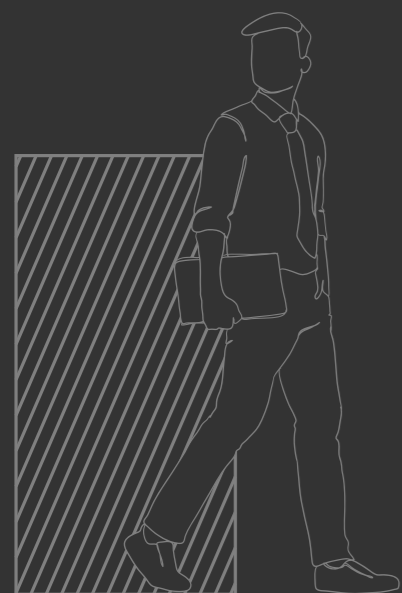


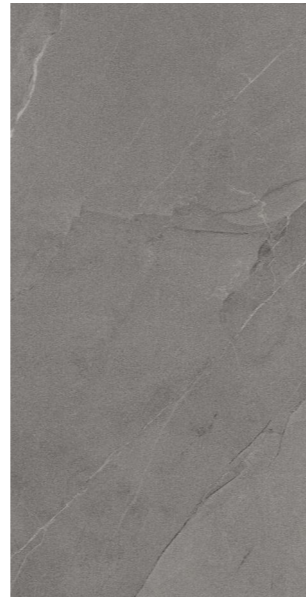
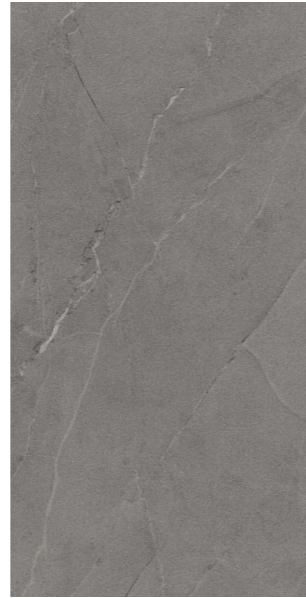
VICTORIA GREY

Finish :
MATT SURFACE

Thickness :
8.5MM

Size :
600X1200MM
60X120CM
2'X4'





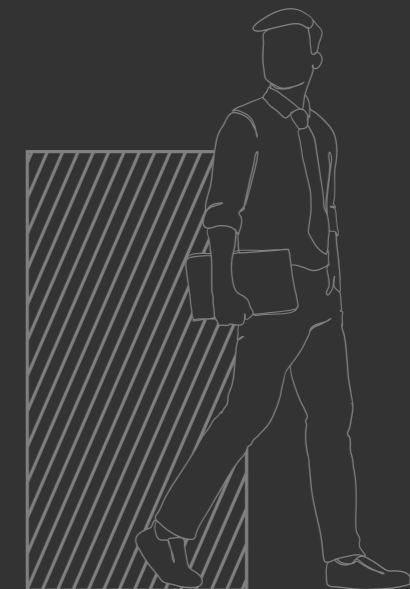
lizon
CERAMICA

VICTORIA GRIS

Finish :
MATT SURFACE

Thickness :
8.5MM

Size :
600X1200MM
60X120CM
2'X4'



9
RANDOMS

TECHNICAL SPECIFICATION

CHARACTERISTIC	STANDARD AS PER ISO13006:2018/ EN14411 Gr.B1a	MEAN VALUE OF LIZON	TEST METHOD
Regulatory Properties			
Deviation in length and width	± 0.30 % (±1.00mm)	± 0.10 %	ISO 10545-2
Deviation in thickness	± 5.00 % (±0.50mm)	± 4.00 %	ISO 10545-2
Straightness in side	± 0.30 % (±0.80mm)	± 0.10 %	ISO 10545-2
Rectangularity	± 0.30 % (±1.50mm)	± 0.10 %	ISO 10545-2
Surface flatness central curvature	± 0.40 % (±1.80mm)	± 0.20 %	ISO 10545-2
Surface flatness edge curvature	± 0.40 % (±1.80mm)	± 0.20 %	ISO 10545-2
Surface flatness warpage	± 0.40 % (±1.80mm)	± 0.10 %	ISO 10545-2
Surface quality	> 95% defects free	> 95% defects free	ISO 10545-2
Small Color Difference(For Plain Color)	ΔE < 1.00	ΔE < 0.30	ISO 10545-16
Glossiness (Polished)	as per mfg.	Gloss Value > 90	Glossmeter 60°
Glossiness (Matt)	as per mfg.	3° < GLOSS < 7°	Glossmeter 60°
Glossiness (satin/Posh)	as per mfg.	7° < GLOSS < 18°	Glossmeter 60°
Structural Properties			
Water absorption	0.50 % ≤ Ev ≤ 3.00 %	0.060 % ≤ Ev ≤ 3.00 %	ISO 10545-3
Bulk density	as per mfg.	> 2.28 gm/cc	ISO 10545-3
Massive Mechanical Properties			
Modulus of rupture	Min. 30.0 N/mm ²	Min. 35.0 N/mm ²	ISO 10545-4
Breaking strength thickness ≥7.5	Min. 700.0 N	Min. 1000.0 N	ISO 10545-4
Breaking strength thickness ≥7.5	Min. 1100.0 N	Min. 1300.0 N	ISO 10545-4
Breaking strength thickness ≥7.5(For ≥15mm)	Min. 1100.0 N	Min. 1800.0 N	ISO 10545-4
Surface Mechanical Properties			
MOH'S hardness	as per mfg.	Polished Min 4* / Satin, Posh & Matt Min 6	BS EN 15771
Surface abrasion resistance	as per mfg.	Polish Min. Class 2, Satin & Posh Min. Class 3, & Matt Min. Class 4	ISO 10545-7
Deep abrasion resistance	Max. 175mm ³	Max. 132mm ³	ISO 10545-6
Thermal Hydrometric Properties			
Moisture expansion	Max. 0.06%(0.6mm/m)	0.02mm/m	ISO 10545-10
Thermal expansion(COE) at 100°C	as per mfg.	Max. 6.0 x 10 ⁻⁶	ISO 10545-8
Thermal shock resistance	Min. 10 Cycle	Min. 10 Cycle	ISO 10545-9
Impact resistance(COR)	Min. 0.55	Min. 0.55	ISO 10545-5
Frost resistance	as per mfg.	Frost Proof	ISO 10545-12
Chemical Properties			
Resistance to staining glazed	Min. Class 3	Min. Class 4	ISO 10545-14
Resistance to household chemicals & swimming pool salts glazed	Min. Class GB	Min. Class GA	ISO 10545-13
Resistance to low concentrate acid and alkalis glazed	as per mfg.	Min. Class GLA**	ISO 10545-13
Resistance to high concentrate acid and alkalis unglazed	as per mfg.	Min. Class GHB**	ISO 10545-13
Safety Properties			
Skid resistance (COF-WET PENDULAM)##	as per mfg.	Glossy P0(<12), Satin, Posh ≥P1 (12-24) Matt ≥P2(25-34)	BS 7976-2
Slip resistance - (Satin / Matt (DCOF) (R value)##	as per mfg.	R9 to R13**	DIN 51130
Fire resistance	as per mfg.	Fire Proof	N.A.

PACKING DETAILS

SIZE	ACTUAL SIZE	THICKNESS	TILES / BOX	COVERAGE AREA / BOX
60x120cm	600x1200mm	8.5mm	3 pcs.	2.16 sq. mtr. 23.25 sq. ft.
60x120cm	600x1200mm	8.5mm	2 pcs.	1.44 sq. mtr. 15.50 sq. ft.



LIZON CERAMICA LLP

NH 8/A, Matel Dhuvu Rd, Lakadhar,
Wankaner, Morbi, Gujarat 363621

E-mail : info@lizonceramica.com | Call : +91 9913077772

www.lizonceramica.com